

Test by: Field Research Innovations Inc. Shannon, IL

2025 Soybeans Top 30 Harvest Report

Wisconsin South [WISO] WOODSTOCK, IL

Dan Sass, McHenry County, IL 60098

All-Season Test	Maturity Group 1.8 - 2.5 S2025WISO01
Top 30 of 30	For Gross Income (Sorted by Yield) Average of (3) Replications
PREV. CROP/HERB:	Corn / Valor Xlt, Zidua Sc, Clethodium, Enlist
SOIL DESCRIPTION:	Millstream silt loam, mod. poorly drained, non-irrigated
SOIL CONDITION:	7.0 pH, 4.43% OM, 12.05 CEC, high P, low K, low S, high B, high Zn
TILLAGE/CULTIVATION:	Conventional W/ Fall Till
PEST MANAGEMENT:	Zidua Sc, Roundup Powermax 3, Valor Xlt, Clethodim, Enlist One
FERTILITY - Other:	Boron, Molybdenum
Applied N-P-K (units):	0-0-0
SEEDED - RATE - ROW:	Apr 28 160.0 /A 15" spacing
HARVESTED - STAND:	Sep 30 139.2 /A
PEST & DISEASE RISK:	Phytophthora*

TEST COMMENTS:

This plot was planted early under excellent field conditions. Light rains followed planting, supporting initial emergence. Through the summer, rainfall remained consistent but lighter than the 10-year average. Stands were great, and lodging was minimal throughout the plot. During harvest, there were some green stems but the pods were full and dry. No disease was observed at the time of harvest. Despite the below-average rainfall, this plot performed well, with resilience under dry growing conditions. Results were rejected due to yield variability with insignificant differences among the varieties.

Company/Brand	Product/Brand	Tested †	RR	SCN Resist.	Yield Bu./A	Moisture %	Lodging %	Stand (x 1000)	Gross Income \$/Acre	Rank
FS Genetics	2828E +	03	2.3	W	71.2	13.7	1	128.3	711	1
CONAGRAND	CONAGRAND +	03	2.4	W	69.9	13.7	1	130.7	699	2
LS Seeds	LS2828E3-0C +	03	2.3	NA	69.9	13.3	1	136.7	697	3
FS Genetics	HS 28E40 +	03	2.3	W	68.0	13.3	7	139.7	679	4
FS Genetics	HS 28E30 +	03	2.3	PK	67.9	13.2	2	135.3	679	5
FS Genetics	2828E +	03	2.3	PK	67.9	13.8	1	131.7	672	6
Genesys	02708E +	03	2.3	W	66.3	13.8	1	140.7	662	7
FS Genetics	2828E +	03	2.3	PK	65.8	13.8	1	146.0	657	8
Monsanto	W8230-0C +	03	2.3	W	65.7	13.8	1	114.3	656	9
Genesys	02708E +	03.07	2.3	W	65.7	13.8	1	128.3	654	10
FS Genetics	HS 28E40 +	03	2.3	PK	64.4	13.7	2	125.3	653	11
Burns	2808E-0C +	03	2.3	W	65.7	13.3	1	142.0	650	12
Alamo	NO 2808E +	03	2.3	W	64.9	13.3	2	142.0	647	13
Fortus	2708E +	03	2.3	W	64.7	14.1	1	131.0	646	14
FS Genetics	HS 28E30 +	03	2.3	PK	64.6	14.0	3	128.3	645	15
Alamo	NO 2808E +	03	2.3	W	64.3	13.8	2	130.3	642	16
Loyal	L2870E +	03	2.3	PK	64.2	13.8	1	136.7	641	17
Loyal	L2808E +	03	2.3	W	63.8	13.3	1	125.3	637	18
Fortus	2840E +	03	2.4	W	63.6	13.3	1	142.0	636	19
Loyal	L2870E +	03	2.3	PK	63.6	13.7	2	125.7	636	20
Fortus	2808E +	03	2.3	PK	63.2	13.3	1	128.3	631	21
Genesys	07040E-0C +	03	2.4	W	63.1	13.3	1	139.0	630	22
Genesys	02708E +	03	2.3	PK	63.1	13.3	1	145.0	630	23
Alamo	NO 2870E +	03	2.3	PK	63.0	13.4	1	147.7	628	24
Genesys	02708E +	03	2.1	W	62.9	13.9	1	142.0	628	25
Alamo	NO 2808E +	03	2.3	PK	62.3	13.4	9	145.0	622	26
Genesys	07040E +	03	1.9	PK	61.9	13.7	3	130.7	619	27
Fortus	2808E +	03	2.3	PK	59.9	13.8	1	119.7	599	28
Alamo	NO 2808E +	03	2.2	W	59.2	13.8	1	126.3	591	29
Loyal	L1808E +	03	1.8	PK	57.7	14.0	6	149.0	576	30

Matt Speers

Matt Speers

matt.speers@firstseedtests.com, (779) 245-1481

Averages = **64.6** **13.6** **2** **139.2** **645**

LSD (0.10) = ns 0.3 ns

LSD (0.25) = ns 0.1 ns

C.V. = 7.4

Historic yield: 51.49 bu/a, 2 yr(s)

Yield & Income Factors:

Base Moisture = 13.0%

Shrink = 1.3

Drying = \$0.00

Prices: GMO = \$9.98

Report Date: 10/01/2025

Additional reports available at www.firstseedtests.com

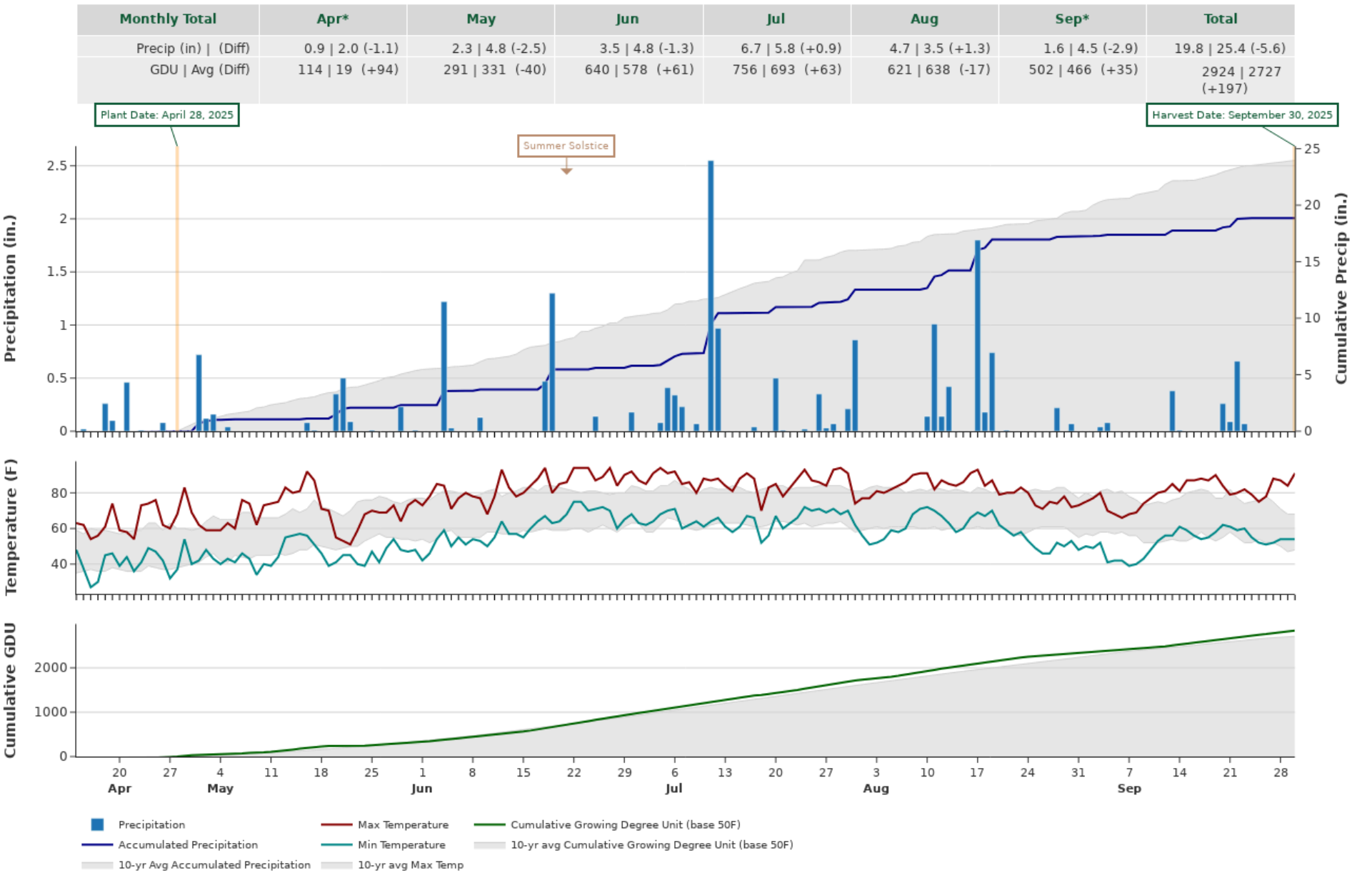
† See last page for abbreviation descriptions. **Dark colored row** identifies the check product found in early- and full-season tests. **Bold** yields are significantly above test average by LSD(0.10). **Italicized** brands exceed the grain moisture limit for this test. **ns** = column values not significantly different. Earthoptics used for soil conditions and soil-borne disease & pest risks. ↗ Links to full product yield results at www.firstseedtests.com.

©2025, All rights reserved to Farmers' Independent Research of Seed Technologies, LLC.

2025 Soybeans - Wisconsin South [WISO]

Weather Conditions Summary at WOODSTOCK, IL

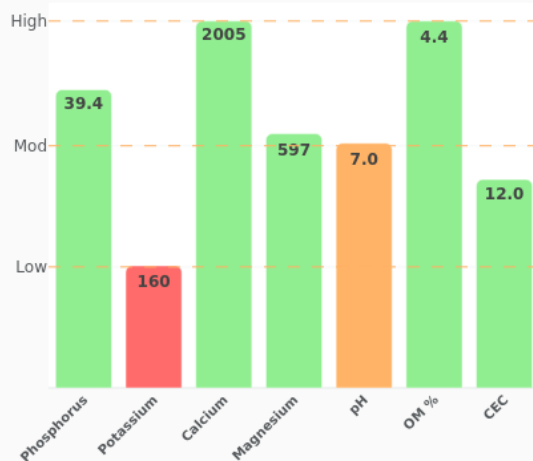
Weather Data Retrieved: 10/01/2025



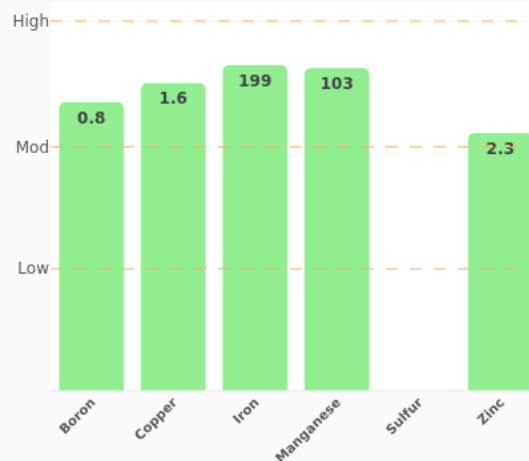
* First monthly total starts on the date 14 days prior to planting and final monthly total ends on the harvest date.

Note: Weather information from PRISM Climate Group. Data may be revised by the provider after retrieval. FIRST will not revise or update reports to reflect any weather data changes. For information purposes only.

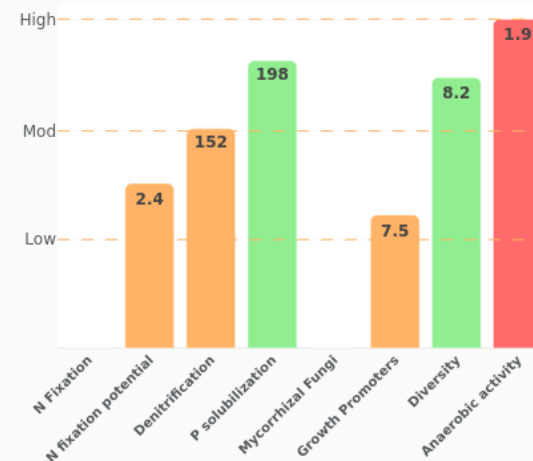
Macronutrients



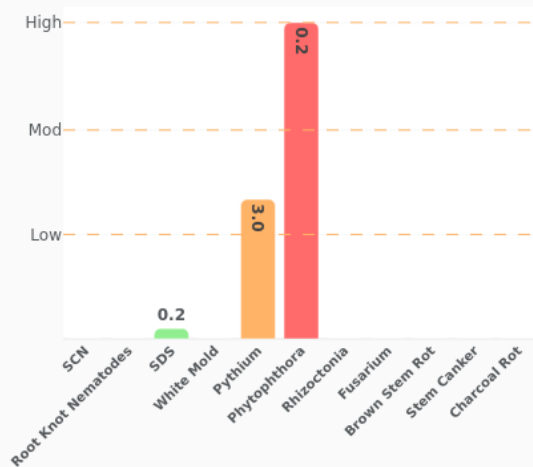
Micronutrients



Biofertility Analytics



Below Ground Pest & Disease - Soybeans



Above Ground Pest & Disease - Soybeans



More Information

You can find more information about the EarthOptics and soil analytics reported at the following links:

- [Reported Analytics Descriptions](#)
- [Soil Nutrients & Fertility](#)
- [Analytics & Insights](#)
- [EarthOptics](#)

2025 Soybeans - Wisconsin South [WISO]

All-Season Test Products (30 Total)

Company/Brand	Product/Brand	Technology	SCN	RM	Seed Treat.
Burrus	2588E	E3	M	2.5	BPS-SDS
Connect	CT2424E	E3	M	2.4	Untreated
DONMARIO	DM24E84	E3	M	2.4	CMB-APX,SA
Fortus	2096E	E3	PK	2.0	ACi,SU
Fortus	2165E	E3	M	2.1	ACi,SU
Fortus	2366E	E3	PK	2.3	ACi,SU
Fortus	2445E	E3	M	2.4	ACi,SU
FS HiSOY	HS 18E30	E3	PK	1.8	ACi,SA
FS HiSOY	HS 20E40	E3	M	2.0	ACi,SA
FS HiSOY	HS 23E40	E3	PK	2.3	ACi,SA
FS HiSOY	HS 25E30	E3	PK	2.5	ACi,SA
Genesis	G1980E	E3	PK	1.9	EcTC
Genesis	G2090E	E3	PK	2.0	EcTC,SA
Genesis	G2150E	E3	M	2.1	EcTC,SA
Genesis	G2300E	E3	M	2.3	EcTC,SA
Genesis	G2570ES	E3,ST	M	2.5	EcTC,SA
LG Seeds	LGS2505E3	E3	NA	2.5	ASfi
Loyal	L1860E	E3	PK	1.8	Treated
Loyal	L2070E	E3	PK	2.0	Treated
Loyal	L2370E	E3	PK	2.3	Treated
Loyal	L2380E	E3	M	2.3	Treated
Monier	ME230	E3	M	2.3	D,Sa
P3 Genetics	2520E	E3	PK	2.0	PG+
P3 Genetics	2523E	E3	PK	2.3	PG+
P3 Genetics	2623E	E3	M	2.3	PG+
Xitavo	XO 1986E	E3	M	1.9	PV,IL,OB,Rey
Xitavo	XO 2075E	E3	PK	2.0	PV,IL,OB,Rey
Xitavo	XO 2206E	E3	M	2.2	PV,IL,OB,Rey
Xitavo	XO 2366E	E3	M	2.3	PV,IL,OB,Rey
Xitavo	XO 2556E	E3	PK	2.5	PV,IL,OB,Rey

* FIRST does not inspect products for refuge blend. N* indicates the product was entered without a refuge component by the sponsoring seed company. Prior year entries may contain refuge blend.

Footnotes and Abbreviations Descriptions

Brand Footnotes

CK	Identifies a check product included in early- and full-season tests.
GC	Grower Comparison product included by FIRST when space permits.
§	United Soybean Board sponsored entry

Soybean Cyst Nematode (SCN) Resistance Rating

S	susceptible
MR	moderate resistance
R	resistant
n/a	info unavailable

Soybeans Technologies

E3	Enlist E3®
ST	Sulfonylurea tolerant

Soybeans Seed Treatments*

NA	Not Available
ACi,SA	Acceleron® Standard Insecticide-Fungicide, Saltro®
ACi,SU	Acceleron® Standard Insecticide-Fungicide, StepUp
ASfi	AgriShield Max
BPS-SDS	Burrus PowerShield® SDS
CMB-APX,SA	CruiserMaxx® APX with Saltro®
D,Sa	Duo, Saltro
EcTC	Eclipse US Total Coverage Trio IM, N-Force
EcTC,SA	Eclipse US Total Coverage Trio IM, N-Force, Saltro®
PG+	Profit Guard +
PV,IL,OB,Rey	Poncho®/Votivo®, ILeVO, Obvius Plus, Relenya®
Treated	Treated, unspecified
Untreated	No seed treatment

* Seed treatments may include unspecified plant health promoting components.