

Test by: M&D Seed Research, LLC Van Buren, IN

2025 Soybeans Top 30 Harvest Report

Indiana North [INNO] VALPARAISO, IN

Herrold Farms, Jeff Herrold, Porter County, IN 46391

All-Season Test	Maturity Group 2.4 - 3.4 S2025INNO07
Top 30 of 71	For Gross Income (Sorted by Yield) Average of (3) Replications
PREV. CROP/HERB:	Corn, Rye Cover Crop / Verdict, Callisto, Atrazine
SOIL DESCRIPTION:	Alida loam, mod. poorly drained, non-irrigated
SOIL CONDITION:	6.17 pH, 2.89% OM, 10.65 CEC, high P, low K, low S, mod. B, high Zn
TILLAGE/CULTIVATION:	Minimum W/O Fall Till
PEST MANAGEMENT:	Roundup, Authority Atz, Liberty, Enlist, Clethodim, Aproach Prima Fungicide
FERTILITY - Other:	5 Fall, Lime applied in fall
Applied N-P-K (units):	5-0-42
SEDED - RATE - ROW:	May 7 146.0 /A 30" spacing
HARVESTED - STAND:	Oct 11 129.6 /A
PEST & DISEASE RISK:	SDS, Stem Canker, Brown Stem Rot*

TEST COMMENTS:

This was a no-till site planted into green cereal rye. The location started off well, with good emergence and lots of well-timed rains to aid in growth and pod development. The bean size was better than other sites, thanks to more moisture later into the season. Plants were tall and podded very well at harvest. Fungicide applied at R3 kept the plants healthy and added late-season moisture.

Company/Brand	Product/Brand	Technol.†	RM	SCN Resist.	Yield Bu/A ↓	Moisture %	Lodging %	Stand (x 1000)	Gross Income \$/Acre	Rank
Xitavo	XO 3224E ↗	E3	3.2	PK	77.6	12.2	1	128.3	737	1
Wyckoff	W2900E3 ↗	E3	2.9	M	77.4	12.6	1	130.7	735	2
Great Heart	GT-3337E ↗	E3	3.3	PK	76.6	12.4	1	128.0	728	3
Ebberts	E3301 E3 ↗	E3	3.3	PK	75.8	12.5	1	129.3	720	4
Dairyland	DSR-3178E ↗	E3	3.1	M	75.3	12.7	1	131.7	715	5
Wyckoff	W2300E3 ↗	E3	2.3	M	74.3	12.7	1	130.0	706	6
Fortus	2775ES ↗	E3,ST	2.7	PK	74.1	12.6	1	129.0	704	7
AgVenture	AV31C3E GC ↗	E3	3.1	M	74.0	12.6	1	134.0	703	8
Connect	CT2826E GC ↗	E3	2.8	M	73.8	12.4	1	128.7	701	9
Seed Genetics Direct	ET-5723E3 ↗	E3	2.4	M	73.7	12.9	1	128.3	700	10
FS HiSOY	HS 30E40 ↗	E3,ST	3.0	M	73.4	12.9	1	131.3	697	11
FS HiSOY	HS 33E50 ↗	E3	3.3	M	73.3	12.5	1	131.0	696	12
Apex	AE3150 ↗	E3	3.1	M	73.2	12.5	1	129.7	695	13
Ebberts	E2790 E3 ↗	E3	2.7	PK	73.2	12.6	1	128.3	695	14
Great Heart	GT-3470ES ↗	E3,ST	3.4	M	73.1	12.2	1	126.7	694	15
Dairyland	DSR-3421E ↗	E3	3.4	PK	73.0	12.1	1	130.7	694	16
Fortus	3146E ↗	E3	3.1	M	72.9	12.6	1	128.3	693	17
Ebberts	E3190 E3 ↗	E3	3.1	M	72.9	12.5	1	127.0	693	18
Xitavo	XO 2865E ↗	E3	2.8	M	72.7	12.7	1	131.7	691	19
Genesis	G2900E ↗	E3	2.9	M	72.7	12.5	1	130.0	691	20
Dyna-Gro	S33ES76 ↗	E3,ST	3.3	M	72.5	12.5	1	128.3	689	21
FS HiSOY	HS 25E30 ↗	E3	2.5	PK	72.5	12.6	1	128.7	689	22
ProHarvest	35E52 ↗	E3	3.3	M	72.4	12.6	1	133.3	688	23
Pioneer	P28Z30E GC ↗	E3	2.8	M	72.2	12.5	1	129.7	686	24
FS HiSOY	HS 29E40 ↗	E3	2.9	PK	72.2	12.9	1	131.7	686	25
Great Heart	GT-2740E ↗	E3	2.7	PK	71.9	12.7	1	125.7	683	26
FS HiSOY	HS 28E50 ↗	E3	2.8	M	71.7	12.4	1	129.7	681	27
Wyckoff	W2695E3 ↗	E3	2.6	M	71.7	12.9	1	127.7	681	28
Connect	CT3126E GC ↗	E3	3.1	M	71.4	12.2	1	130.7	678	29
DONMARIO	DM24E84 ↗	E3	2.4	M	71.4	12.8	1	126.0	678	30

Matt Turner

Matt Turner

mattturner1979@yahoo.com, (317) 606-9040

Averages = **70.5** **12.6** **1** **129.6** **670**

LSD (0.10) = 4.0 0.2 0

LSD (0.25) = 2.1 0.1 0

C.V. = 5.4

Historic yield: 62.34 bu/a, 6 yr(s)

Yield & Income Factors:

Base Moisture = 13.0%

Shrink = 1.3

Drying = \$0.00

Prices: GMO = \$9.50

Report Date: 10/11/2025

Additional reports available at www.firstseedtests.com

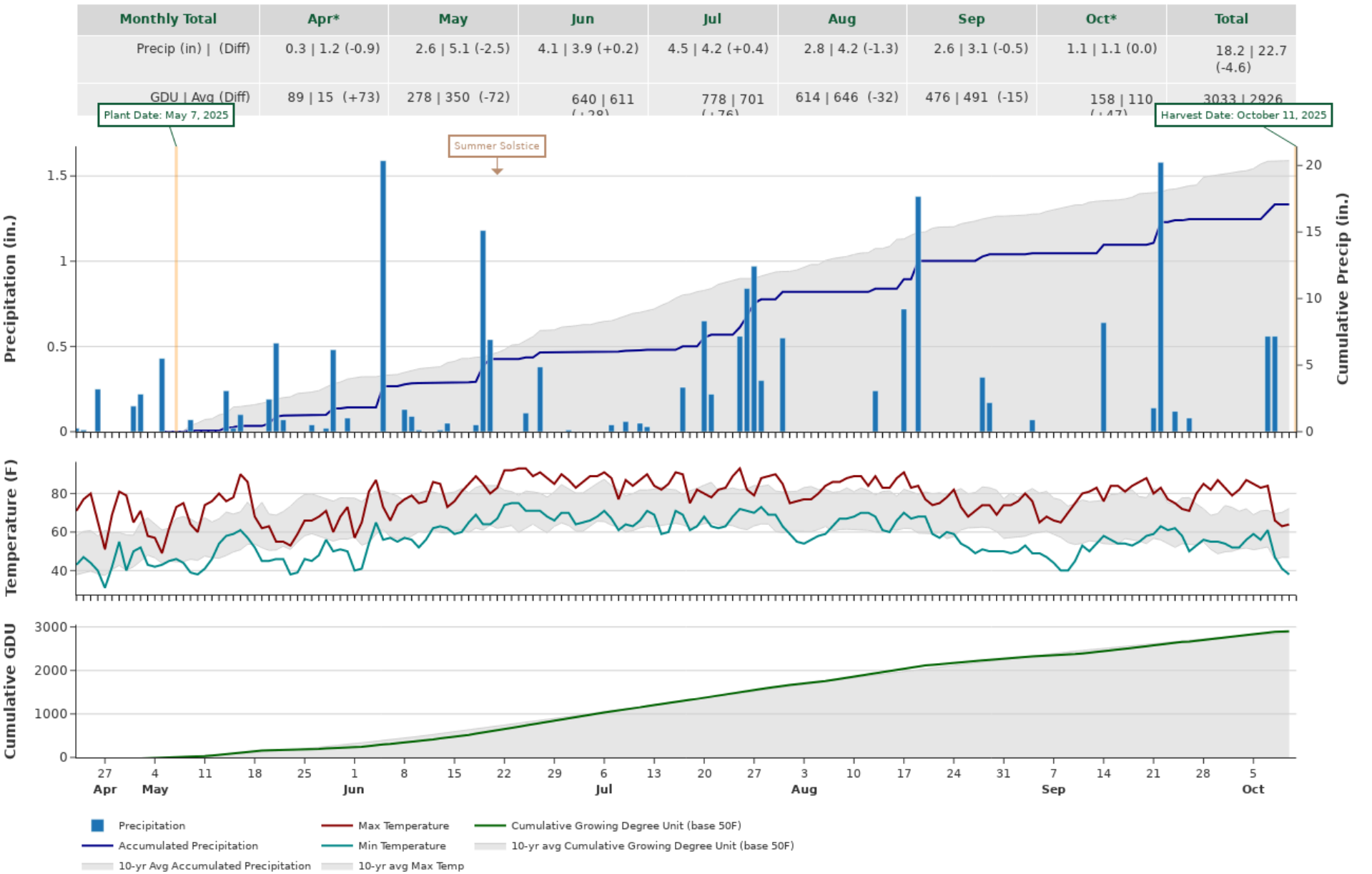
† See last page for abbreviation descriptions. Dark colored row identifies the check product found in early- and full-season tests. **Bold** yields are significantly above test average by LSD(0.10). **Italicized** brands exceed the grain moisture limit for this test. **ns** = column values not significantly different. *Earthoptics used for soil conditions and soil-borne disease & pest risks. ↗ Links to full product yield results at www.firstseedtests.com.

©2025, All rights reserved to Farmers' Independent Research of Seed Technologies, LLC.

2025 Soybeans - Indiana North [INNO]

Weather Conditions Summary at VALPARAISO, IN

Weather Data Retrieved: 10/11/2025



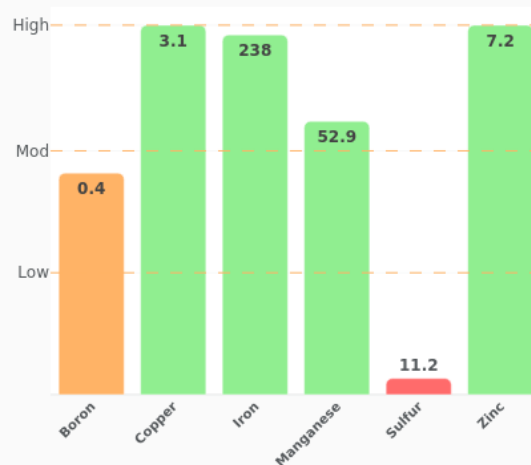
* First monthly total starts on the date 14 days prior to planting and final monthly total ends on the harvest date.

Note: Weather information from PRISM Climate Group. Data may be revised by the provider after retrieval. FIRST will not revise or update reports to reflect any weather data changes. For information purposes only.

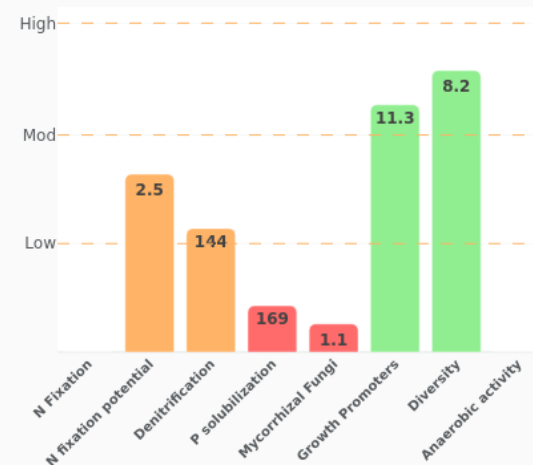
Macronutrients



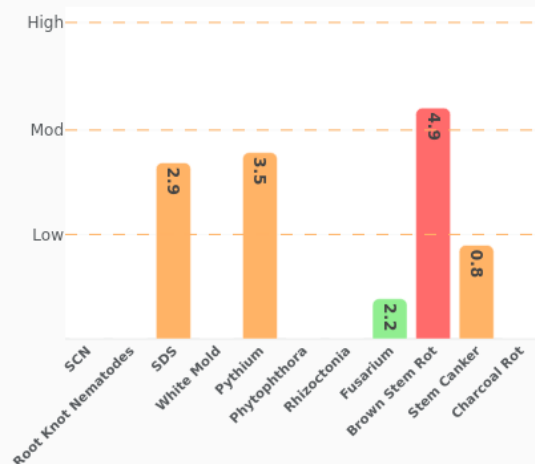
Micronutrients



Biofertility Analytics



Below Ground Pest & Disease - Soybeans



Above Ground Pest & Disease - Soybeans



More Information

You can find more information about the EarthOptics and soil analytics reported at the following links:

- [Reported Analytics Descriptions](#)
- [Soil Nutrients & Fertility](#)
- [Analytics & Insights](#)
- [EarthOptics](#)

2025 Soybeans - Indiana North [INNO]

All-Season Test Products (71 Total)

Company/Brand	Product/Brand	Technology	SCN	RM	Seed Treat.
AgVenture	AV28B2E	E3	M	2.8	CMB-APX,IL
AgVenture	AV31C3E	E3	M	3.1	CMB-APX,IL
AgVenture	AV34B2E	E3	PK	3.4	CMB-APX,IL
Apex	AE2860	E3	M	2.8	PU,Sa
Apex	AE3150	E3	M	3.1	PU,Sa
Connect	CT2826E	E3	M	2.8	ACi
Connect	CT3025E	E3	PK	3.0	ACi
Connect	CT3126E	E3	M	3.1	ACi
Dairyland	DSR-2851E	E3	M	2.8	Lum, LumT, IL
Dairyland	DSR-2994E	E3	PK	2.9	Lum, LumT, IL
Dairyland	DSR-3178E	E3	M	3.1	Lum, LumT, IL
Dairyland	DSR-3421E	E3	PK	3.4	Lum, LumT, IL
DONMARIO	DM24E84	E3	M	2.4	CMB-APX,SA
DONMARIO	DM33E55	E3	M	3.3	CMB-APX,SA
Dyna-Gro	S29ES45	E3,ST	M	2.9	PLTM
Dyna-Gro	S33ES76	E3,ST	M	3.3	PLTM
Ebberts	E2501 E3	E3	M	2.5	Ebberts
Ebberts	E2790 E3	E3	PK	2.7	Ebberts
Ebberts	E2800 E3	E3	M	2.8	Ebberts
Ebberts	E3000 E3	E3	PK	3.0	Ebberts
Ebberts	E3190 E3	E3	M	3.1	Ebberts
Ebberts	E3301 E3	E3	PK	3.3	Ebberts
Ebberts	E3302 E3	E3	M	3.3	Ebberts
Ebberts	E3590 E3	E3,ST	M	3.4	Ebberts
Fortus	2775ES	E3,ST	PK	2.7	ACi,SU
Fortus	2846ES	E3,ST	M	2.8	ACi,SU
Fortus	3005ES	E3,ST	M	3.0	ACi,SU
Fortus	3146E	E3	M	3.1	ACi,SU
Fortus	3394E	E3	PK	3.3	ACi,SU
FS HiSOY	HS 25E30	E3	PK	2.5	ACi,SA
FS HiSOY	HS 26E50	E3	PK	2.6	ACi,SA
FS HiSOY	HS 28E50	E3	M	2.8	ACi,SA
FS HiSOY	HS 29E40	E3	PK	2.9	ACi,SA
FS HiSOY	HS 30E40	E3,ST	M	3.0	ACi,SA
FS HiSOY	HS 31E20	E3,ST	M	3.1	ACi,SA
FS HiSOY	HS 33E50	E3	M	3.3	ACi,SA

Company/Brand	Brand/Product	Technology	SCN	RM	Seed Treat.
FS HiSOY	HS 34E40	E3	PK	3.4	ACi,SA
Genesis	G2900E	E3	M	2.9	EcTC,SA
Genesis	G3171ES	E3,ST	M	3.1	EcTC,SA
Genesis	G3380E	E3	PK	3.3	EcTC,SA
Great Heart	GT-2740E	E3	PK	2.7	Gr+
Great Heart	GT-2944E	E3	PK	2.9	Gr+
Great Heart	GT-3337E	E3	PK	3.3	Gr+
Great Heart	GT-3470ES	E3,ST	M	3.4	Gr+
Partners Brand	28E603N	E3	M	2.8	A3030
Partners Brand	32E606N	E3	M	3.2	A3030
Pioneer	P28Z30E	E3	M	2.8	Lum, LumT, IL
Pioneer	P31A73E	E3	R	3.1	Untreated
ProHarvest	26E68	E3	M	2.6	PU
ProHarvest	35E52	E3	M	3.3	PU
Seed Genetics Direct	ET-0733E3	E3	M	3.3	F,B,NE
Seed Genetics Direct	ET-3729E3S	E3,ST	M	2.9	F,B,NE
Seed Genetics Direct	ET-4732E3	E3	PK	3.2	F,B,NE
Seed Genetics Direct	ET-5723E3	E3	M	2.4	F,B,NE
Seed Genetics Direct	ET-5734E3	E3	M	3.4	F,B,NE
Wyckoff	W2300E3	E3	M	2.3	WyK,Sa
Wyckoff	W2695E3	E3	M	2.6	WyK
Wyckoff	W2790E3	E3,ST	PK	2.7	WyK
Wyckoff	W2800E3	E3	M	2.8	WyK,Sa
Wyckoff	W2900E3	E3	M	2.9	WyK,Sa
Wyckoff	W3000E3	E3	PK	3.0	WyK,Sa
Wyckoff	W3190E3	E3	M	3.1	WyK
Wyckoff	W3590E3	E3,ST	M	3.4	WyK
Xitavo	XO 2444E	E3	M	2.4	PV,IL,OB,Rey
Xitavo	XO 2556E	E3	PK	2.5	PV,IL,OB,Rey
Xitavo	XO 2735E	E3	M	2.7	PV,IL,OB,Rey
Xitavo	XO 2865E	E3	M	2.8	PV,IL,OB,Rey
Xitavo	XO 2926E	E3	M	2.9	PV,IL,OB,Rey
Xitavo	XO 3014E	E3	M	3.0	PV,IL,OB,Rey
Xitavo	XO 3224E	E3	PK	3.2	PV,IL,OB,Rey
Xitavo	XO 3375E	E3	M	3.3	PV,IL,OB,Rey

* FIRST does not inspect products for refuge blend. N* indicates the product was entered without a refuge component by the sponsoring seed company. Prior year entries may contain refuge blend.

Footnotes and Abbreviations Descriptions

Brand Footnotes

CK	Identifies a check product included in early- and full-season tests.
GC	Grower Comparison product included by FIRST when space permits.

Soybean Cyst Nematode (SCN) Resistance Source or Rating

Note: Source of SCN resistance used when available, otherwise older susceptibility ratings are reported.

M	PI 88788 (MR)
PK	Peking (R)
H	Hartwig (R)
B	Blend (PK + M)
MR	moderate resistance
R	resistant
S	susceptible
NA	info unavailable

Soybeans Technologies

E3	Enlist E3®
ST	Sulfonylurea tolerant

Soybeans Seed Treatments*

A3030	Alert 3030 - Partners brand
ACi	Acceleron® Standard Insecticide-Fungicide
ACi,SA	Acceleron® Standard Insecticide-Fungicide, Saltro®
ACi,SU	Acceleron® Standard Insecticide-Fungicide, StepUp
CMB-APX,IL	CruiserMaxx® APX with ILEVO®
CMB-APX,SA	CruiserMaxx® APX with Saltro®
Ebberts	Ebberts Complete Soybean (Ebberts Field Seeds)
EcTC,SA	Eclipse US Total Coverage Trio IM, N-Force, Saltro®
F,B,NE	Fungicide, Biological, Nematicide
Gr+	Great Start Max Plus (Great Heart Seed)
Lum, LumT, IL	LumiGEN™, LumiTreo, ILEVO
PLTM	DynaGro PLTM
PU	Protect Ultra
PU,Sa	Protect Ultra, Saltro
PV,IL,OB,Rey	Poncho®/Votivo®, ILeVO, Obvius Plus, Relenya®
Untreated	No seed treatment
WyK	WyckOAT fueled by Soy-Defense (Wyckoff Hybrids)
WyK,Sa	WyckOAT fueled by Soy-Defense (Wyckoff Hybrids), Saltro

* Seed treatments may include unspecified plant health promoting components.