

Test by: NewVenture, LLC Ellendale, MN

2025 Corn Grain Top 30 Harvest Report

Minnesota West Central [MNWC] BROOTEN, MN

Michael Stamer Farms, Michael Stamer, Pope County, MN
56201

Ultra Early-Season Test	88 - 92 Day CRM B2025MNWC02u
Top 24 of 24	For Gross Income (Sorted by Yield) Average of (3) Replications
PREV. CROP/HERB:	Corn / Harness, Laudis, Atrazine, Dicamba
SOIL DESCRIPTION:	Waukon-Langhei loam, well drained, irrigated
SOIL CONDITION:	Conventional W/ Fall Till, 7.13 pH, 4.12% OM, 15.75 CEC, high P, high K, low S, high B, high Zn
PEST MANAGEMENT:	Aztec, Harness, Laudis, Atrazine, Dicamba
FERTILITY - Applied N:	38 Spring, 177 Sidedress, eXceed Nano Brown Sugar
Applied N-P-K (units):	215-0-38
SEEDED - RATE - ROW:	Apr 26 35.7 /A 30" spacing
HARVESTED - STAND:	Oct 24 33.4 /A
PEST & DISEASE RISK:	Rootworm, Diplodia Ear Rot*

TEST COMMENTS:

This irrigated corn on corn site didn't need the pivots much this season, as they received almost 8 inches more rain than normal. The host farmer said that the heavy rains seemed to wash away the nitrogen, leading to a less-than-stellar yield. An early-season wind resulted in some goosenecking, and strong winds right before harvest contributed to some increased lodging scores. Thank you to Mike for hosting.

Report Date: 10/24/2025

Additional reports available at www.firstseedtests.com

Company/Brand	Product/Brand	Technol.†	RM	Yield Bu/A ↓	Moisture %	Lodging %	Stand (x 1000)	Gross Income \$/Acre	Rank
Augusta	A2337-PCE ↗	PCE	87	201.5	15.4	3	34.8	753	1
Anderson	8690 GC ↗	CONV	90	197.7	15.4	3	33.4	739	2
Jacobsen	JS8994 GC ↗	PCE	89	197.7	15.3	4	33.8	739	3
Thunder	T6591 PC ↗	PCE	91	196.5	15.6	1	33.4	733	4
Renk	RK4502VT2P ↗	VT2P	91	193.6	15.3	3	32.4	724	5
Enestvedt	E612RR ↗	RR2	92	193.1	15.6	0	34.3	720	6
Dairyland	DS-3087PWE ↗	PCE	90	192.4	15.5	10	32.9	718	7
Augusta	A2240-CONV ↗	CONV	90	190.4	15.7	3	34.1	709	8
Viking Blue River	48-90 ↗	CONV	90	187.5	15.3	1	33.4	701	9
Mustang	32P91 VT2P RIB GC ↗	VT2P	91	186.0	15.0	4	34.3	698	10
Viking Blue River	42-92 GC ↗	CONV	92	185.1	15.4	0	32.4	692	11
Jacobsen	JS9283SS ↗	STX	92	184.8	15.2	2	34.3	692	12
Dairyland	DS-2847PCE GC ↗	PCE	88	184.6	15.5	2	34.3	689	13
AP Select	AP 89-12 VT2P GC ↗	VT2P	89	183.6	15.1	5	34.3	688	14
Thunder	T6490 VT2P ↗	VT2P	90	183.3	15.2	1	32.9	686	15
Thunder	T6389 VT2P ↗	VT2P	89	182.9	15.2	1	32.4	685	16
Renk	RK296AA ↗	AA	89	178.5	15.4	4	33.9	667	18
AP Select	AP 92-55 SS GC ↗	STX	92	178.5	15.2	0	32.9	668	17
Renk	RK304VT2P ↗	VT2P	90	175.4	15.0	1	31.9	658	19
Augusta	A2140-AA-EZ ↗	D	90	172.2	15.5	7	34.8	643	20
Thunder	T6592 VT2P ↗	VT2P	92	170.2	15.0	0	32.4	638	21
Jacobsen	JS9053VT2P GC ↗	VT2P	90	169.7	15.1	4	33.9	636	22
Thunder	T6588 AV ↗	V	88	168.9	15.5	11	32.4	630	23
Dahlman	R92-364SSRIB GC ↗	STX	92	160.5	15.5	1	33.4	599	24

Averages = **184.0** **15.3** **3** **33.4** **688**

LSD (0.10) = 10.4 0.2 ns

LSD (0.25) = 5.4 0.1 ns

C.V. = 5.3

Historic yield: 213.77 bu/a, 3 yr(s)

Ed Dahle

ed.dahle@firstseedtests.com, (507) 456-6624

Yield & Income Factors:

Base Moisture = 15.0%

Shrink = 1.3

Drying = \$0.035

Prices: GMO = \$3.75

† See last page for abbreviation descriptions. Dark colored row identifies the check product found in early- and full-season tests. **Bold** yields are significantly above test average by LSD(0.10). **Italicized** brands exceed the grain moisture limit for this test. **ns** = column values not significantly different. *[Earthoptics](#) used for soil conditions and soil-borne disease & pest risks. ↗ Links to full product yield results at www.firstseedtests.com.

©2025, All rights reserved to Farmers' Independent Research of Seed Technologies, LLC.

Test by: NewVenture, LLC Ellendale, MN

2025 Corn Grain Top 30 Harvest Report

Minnesota West Central [MNWC] BROOTEN, MN

Michael Stamer Farms, Michael Stamer, Pope County, MN
56201

Early-Season Test	93 - 98 Day CRM B2025MNWC02a
Top 30 of 42	For Gross Income (Sorted by Yield) Average of (3) Replications
PREV. CROP/HERB:	Corn / Harness, Laudis, Atrazine, Dicamba
SOIL DESCRIPTION:	Waukon-Langhei loam, well drained, irrigated
SOIL CONDITION:	Conventional W/ Fall Till, 7.13 pH, 4.12% OM, 15.75 CEC, high P, high K, low S, high B, high Zn
PEST MANAGEMENT:	Aztec, Harness, Laudis, Atrazine, Dicamba
FERTILITY - Applied N:	38 Spring, 177 Sidedress, eXceed Nano Brown Sugar
Applied N-P-K (units):	215-0-38
SEEDED - RATE - ROW:	Apr 26 35.7 /A 30" spacing
HARVESTED - STAND:	Oct 24 33.8 /A
PEST & DISEASE RISK:	Rootworm, Diplodia Ear Rot*

TEST COMMENTS:

This irrigated corn on corn site didn't need the pivots much this season, as they received almost 8 inches more rain than normal. The host farmer said that the heavy rains seemed to wash away the nitrogen, leading to a less-than-stellar yield. An early-season wind resulted in some goosenecking, and strong winds right before harvest contributed to some increased lodging scores. Thank you to Mike for hosting.

Company/Brand	Product/Brand	Technol.†	RM	Yield Bu/A ↓	Moisture %	Lodging %	Stand (x 1000)	Gross Income \$/Acre	Rank
Renk	RK582SSTX ↗	STX	98	196.4	15.5	3	34.8	733	1
Jacobsen	JS9775 ↗	STXP	97	190.6	16.2	8	34.8	707	3
Renk	RK5522SSPRO ↗	STXP	96	189.2	15.4	2	34.3	707	4
Epley	E9620 ↗	CONV	96	188.3	15.6	1	33.9	702	5
Jacobsen	JS9762 CONV ↗	CONV	96	188.0	15.9	2	34.8	699	6
Thunder	T8696 SSP ↗	STXP	96	186.9	15.6	1	32.4	697	7
Augusta	A3048-AA-EZ ↗	AA	98	186.5	15.3	3	34.1	697	8
Thunder	T6695 VT2P ↗	VT2P	95	185.0	15.2	0	34.8	692	9
Thunder	T6693 PC ↗	PCE	93	184.8	15.1	0	33.8	692	10
Dahlman	6096PCE ↗	PCE	96	183.7	15.0	1	34.3	689	11
DeKalb	DKC098-88RIB GC ↗	VT4P	98	183.4	15.4	1	32.9	685	12
Prairie Hybrids	591 ↗	CONV	95	182.5	15.7	32	34.8	680	15
Dahlman	R98-360SSP ↗	STXP	98	182.5	15.3	1	30.9	682	13
Rob-See-Co	RC4779-PCE ↗	PCE	97	182.3	16.0	11	34.3	677	17
Jacobsen	JS9635 ↗	STXP	96	181.9	15.0	2	32.9	682	14
Prairie Hybrids	731 ↗	CONV	96	181.8	15.2	0	34.8	680	16
Jacobsen	JS9863 ↗	VT4P	98	181.3	15.6	8	34.8	676	18
AP Select	AP 98-50 TRE GC ↗	TRE	98	180.7	15.5	0	33.8	674	19
AP Select	AP 95-95 DGVT2P GC ↗	VT2P	95	179.8	16.1	3	33.8	668	21
Enestvedt	E654 ↗	CONV	96	179.0	16.1	20	33.8	665	22
Renk	RK5518TRE ↗	TRE	97	179.0	15.3	6	34.3	669	20
Anderson	747SSP GC ↗	STXP	98	176.7	15.5	0	31.9	660	23
Dairyland	DS-3548PCE ↗	PCE	95	175.5	15.3	4	34.8	656	25
Jacobsen	JS9723TRE ↗	TRE	97	175.4	15.1	5	34.3	657	24
Titan Pro	41-96 SSP ↗	STXP	96	175.2	15.3	2	34.8	655	26
Thunder	T6498 PC ↗	PCE	98	175.2	16.9	15	32.9	646	27
Epley	E9850 ↗	CONV	98	172.5	15.9	1	34.8	642	30
Dahlman	R96-266TRE ↗	TRE	96	172.3	15.5	1	32.9	643	29
Thunder	T6294 VT2P ↗	VT2PDG	94	172.2	15.3	3	33.9	644	28
Epley	E9615DV ↗	DV	96	171.5	15.4	2	32.9	641	31
PIONEER	P9955V CK	VE	99	195.5	15.9	1	34.8	727	2

Averages = **176.0** **15.5** **5** **33.8** **654**

LSD (0.10) = 13.6 0.5 6

LSD (0.25) = 7.1 0.3 3

C.V. = 7.3

Historic yield: 213.77 bu/a, 3 yr(s)

Ed Dahle

ed.dahle@firstseedtests.com, (507) 456-6624

Yield & Income Factors:

Base Moisture = 15.0%

Shrink = 1.3

Drying = \$0.035

Prices: GMO = \$3.75

Report Date: 10/24/2025

Additional reports available at www.firstseedtests.com

† See last page for abbreviation descriptions. Dark colored row identifies the check product found in early- and full-season tests. **Bold** yields are significantly above test average by LSD(0.10). **Italicized** brands exceed the grain moisture limit for this test. **ns** = column values not significantly different. *Earthoptics used for soil conditions and soil-borne disease & pest risks. ↗ Links to full product yield results at www.firstseedtests.com.

©2025, All rights reserved to Farmers' Independent Research of Seed Technologies, LLC.

Test by: NewVenture, LLC Ellendale, MN

2025 Corn Grain Top 30 Harvest Report

Minnesota West Central [MNWC] BROOTEN, MN

Michael Stamer Farms, Michael Stamer, Pope County, MN 56201

Full-Season Test	99 - 102 Day CRM B2025MNWC02b
Top 30 of 36	For Gross Income (Sorted by Yield) Average of (3) Replications
PREV. CROP/HERB:	Corn / Harness, Laudis, Atrazine, Dicamba
SOIL DESCRIPTION:	Waukon-Langhei loam, well drained, irrigated
SOIL CONDITION:	Conventional W/ Fall Till, 7.13 pH, 4.12% OM, 15.75 CEC, high P, high K, low S, high B, high Zn
PEST MANAGEMENT:	Aztec, Harness, Laudis, Atrazine, Dicamba
FERTILITY - Applied N:	38 Spring, 177 Sidedress, eXceed Nano Brown Sugar
Applied N-P-K (units):	215-0-38
SEEDED - RATE - ROW:	Apr 26 35.7 /A 30" spacing
HARVESTED - STAND:	Oct 24 33.5 /A
PEST & DISEASE RISK:	Rootworm, Diplodia Ear Rot*

TEST COMMENTS:

This irrigated corn on corn site didn't need the pivots much this season, as they received almost 8 inches more rain than normal. The host farmer said that the heavy rains seemed to wash away the nitrogen, leading to a less-than-stellar yield. An early-season wind resulted in some goosenecking, and strong winds right before harvest contributed to some increased lodging scores. Thank you to Mike for hosting.

Company/Brand	Product/Brand	Technol.†	RM	Yield Bu/A ↓	Moisture %	Lodging %	Stand (x 1000)	Gross Income \$/Acre	Rank
Dahlman	5102PCE ↗	PCE	102	222.4	17.3	0	34.8	816	1
Rob-See-Co	RC5263-PCE ↗	PCE	102	215.6	17.2	4	33.4	792	2
Augusta	A2252-D ↗	D	102	209.3	17.1	2	32.4	769	3
Titan Pro	57-01 PCE ↗	PCE	101	205.9	17.1	8	34.8	757	5
Renk	RK6555VT4PRO ↗	VT4P	102	205.8	16.4	13	34.8	762	4
Anderson	4501 ↗	CONV	100	203.6	16.4	3	32.9	753	6
Augusta	A3152-PWE ↗	PCE	102	202.9	16.7	1	34.3	749	8
Renk	RK6545PCE ↗	PCE	102	202.7	16.7	6	33.9	748	9
Jacobsen	JS0114 ↗	VT2P	100	201.6	15.8	3	34.3	750	7
Anderson	681SRC ↗	STX	100	199.8	16.0	3	34.3	742	10
Renk	RK583PCE ↗	PCE	99	199.8	17.4	1	33.8	732	12
Viking Blue River	24-99 ↗	CONV	99	198.5	16.6	3	34.3	733	11
Augusta	A2350-D ↗	D	100	198.1	16.9	4	34.3	730	13
Thunder	T6700 PC ↗	PCE	100	196.8	16.9	1	33.9	725	15
Prairie Hybrids	581 ↗	CONV	99	196.5	16.4	12	34.8	727	14
Viking Blue River	46-02 GC ↗	CONV	102	194.1	17.1	2	33.4	714	17
Prairie Hybrids	1556 ↗	CONV	101	193.9	16.9	5	32.4	714	18
Jacobsen	JS0034SS ↗	STX	100	191.9	17.2	3	32.4	705	19
Thunder	T6602 TRE ↗	TRE	102	187.4	16.8	0	29.5	691	21
Thunder	T8602 VT4P ↗	VT4P	102	186.9	15.6	1	32.4	697	20
Thunder	T8502 DC ↗	D	102	183.9	16.7	4	34.3	679	22
Thunder	T6902 VT2P ↗	VT2P	102	183.3	16.5	3	34.3	678	23
Dahlman	R102-263TRE ↗	TRE	102	182.2	16.2	2	33.9	675	24
Jacobsen	JS0223 CONV ↗	CONV	102	181.6	16.0	2	32.4	675	25
Enestvedt	E535SS RIB ↗	STX	102	180.0	16.9	14	33.8	663	27
Jacobsen	JS0342DGV2P ↗	VT2PDG	102	179.4	15.4	1	31.9	670	26
Augusta	A2351-AA-EZ ↗	AA	101	178.5	17.1	0	33.8	656	29
Dahlman	R50-252VT2PRIB ↗	VT2P	100	177.7	15.8	8	32.9	662	28
Rob-See-Co	RC5209-D ↗	D	102	175.8	16.6	2	34.8	650	31
Renk	RK586VT4PRO ↗	VT4P	99	175.3	16.0	0	31.4	651	30
PIONEER	P9955V CK	VE	99	194.3	16.1	1	34.8	721	16

Averages = **190.3** **16.6** **4** **33.5** **703**

LSD (0.10) = 17.5 0.6 ns

LSD (0.25) = 9.2 0.3 ns

C.V. = 8.7

Historic yield: 213.77 bu/a, 3 yr(s)

Ed Dahle

ed.dahle@firstseedtests.com, (507) 456-6624

Yield & Income Factors:

Base Moisture = 15.0%

Shrink = 1.3

Drying = \$0.035

Prices: GMO = \$3.75

Report Date: 10/24/2025

Additional reports available at www.firstseedtests.com

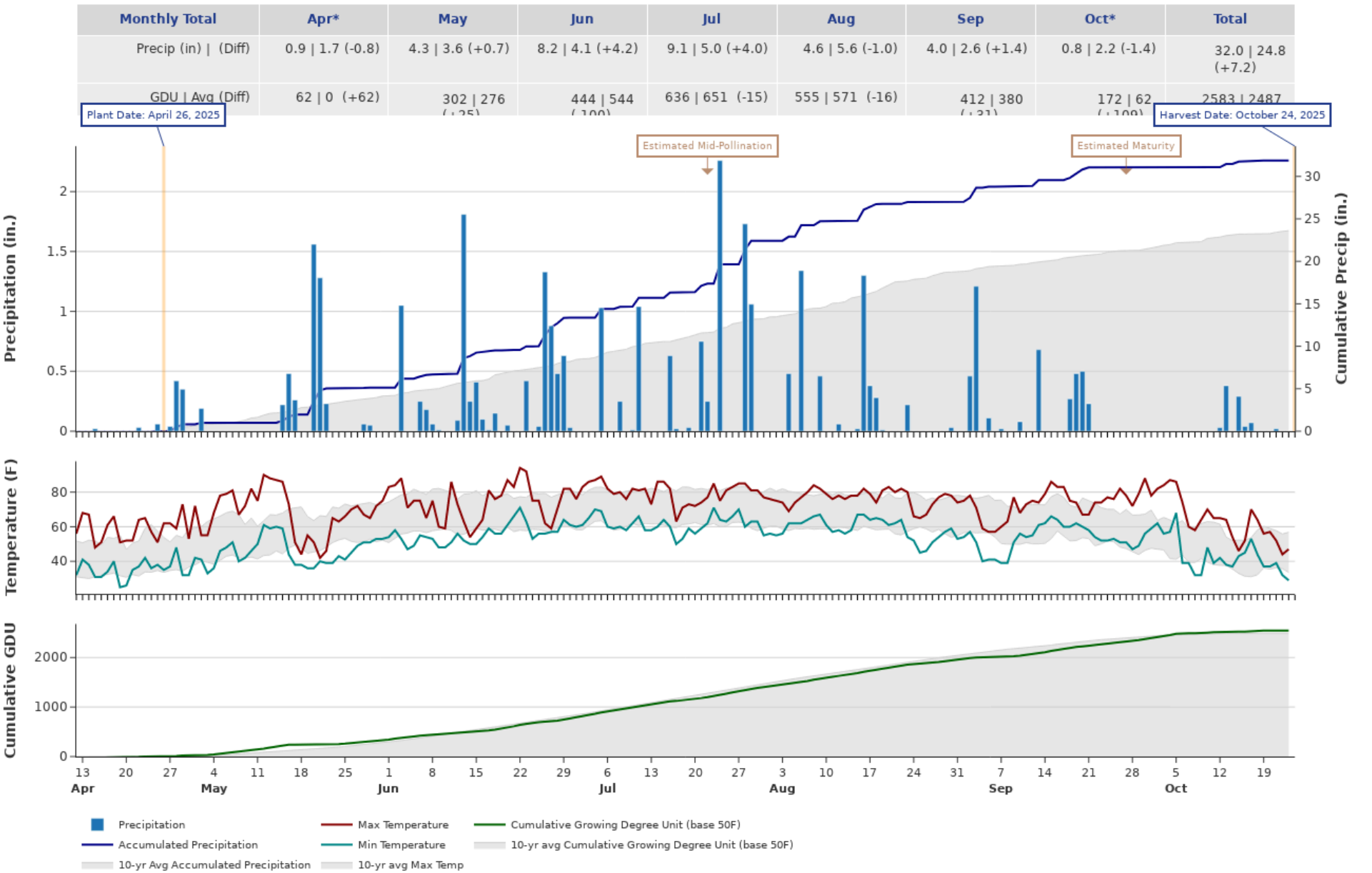
† See last page for abbreviation descriptions. Dark colored row identifies the check product found in early- and full-season tests. **Bold** yields are significantly above test average by LSD(0.10). **Italicized** brands exceed the grain moisture limit for this test. **ns** = column values not significantly different. *[Earthoptics](#) used for soil conditions and soil-borne disease & pest risks. ↗ Links to full product yield results at www.firstseedtests.com.

©2025, All rights reserved to Farmers' Independent Research of Seed Technologies, LLC.

2025 Corn - Minnesota West Central [MNWC]

Weather Conditions Summary at BROOTEN, MN

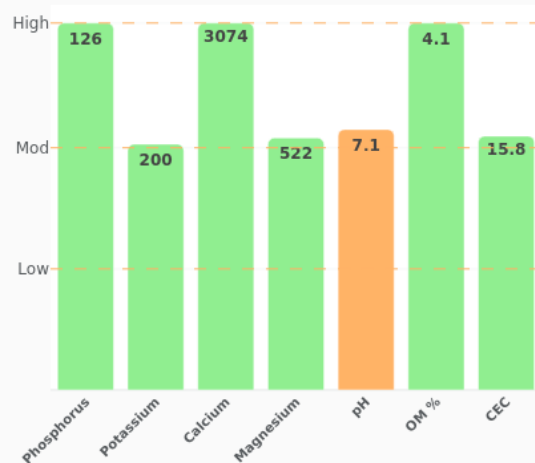
Weather Data Retrieved: 10/24/2025



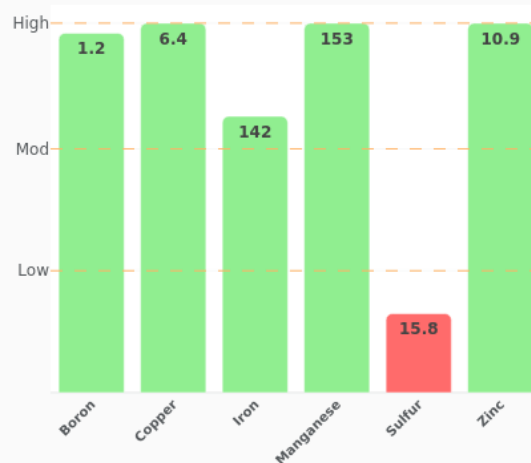
* First monthly total starts on the date 14 days prior to planting and final monthly total ends on the harvest date.

Note: Weather information from PRISM Climate Group. Data may be revised by the provider after retrieval. FIRST will not revise or update reports to reflect any weather data changes. For information purposes only.

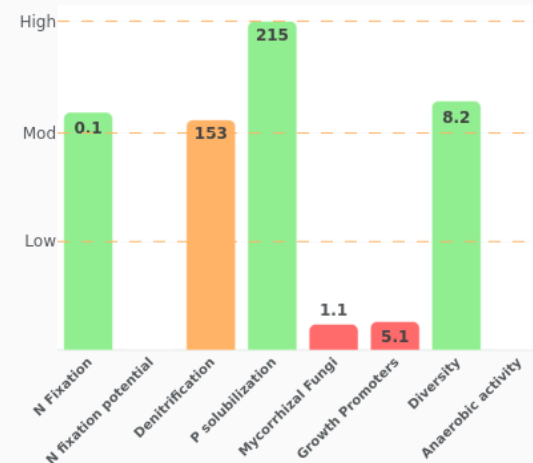
Macronutrients



Micronutrients



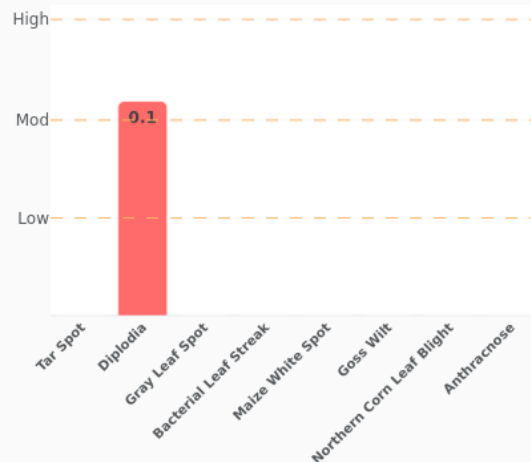
Biofertility Analytics



Below Ground Pest & Disease - Corn



Above Ground Pest & Disease - Corn



More Information

You can find more information about the EarthOptics and soil analytics reported at the following links:

- [Reported Analytics Descriptions](#)
- [Soil Nutrients & Fertility](#)
- [Analytics & Insights](#)
- [EarthOptics](#)

2025 Corn - Minnesota West Central [MNWC]

Ultra Early-Season Test Products (24 Total)

Company/Brand	Product/Brand	Technology	RIB	RM	Seed Treat.
Anderson	8690	CONV	N*	90	Treated
AP Select	AP 89-12 VT2P	VT2P	Y	89	NA
AP Select	AP 92-55 SS	STX	Y	92	NA
Augusta	A2140-AA-EZ	D	N	90	CM,C2
Augusta	A2240-CONV	CONV	N	90	AC,P5V
Augusta	A2337-PCE	PCE	N	87	CM,C5
Dahlman	R92-364SSRIB	STX	Y	92	F,I
Dairyland	DS-2847PCE	PCE	Y	88	Lum, L1
Dairyland	DS-3087PWE	PCE	N	90	Lum, L1
Enestvedt	E612RR	RR2	N	92	AC,P2
Jacobsen	JS8994	PCE	Y	89	F,I
Jacobsen	JS9053VT2P	VT2P	Y	90	F,I
Jacobsen	JS9283SS	STX	Y	92	F,I
Mustang	32P91 VT2P RIB	VT2P	U	91	F,I
Renk	RK296AA	AA	Y	89	CM,C2
Renk	RK304VT2P	VT2P	N	90	AC,P2
Renk	RK4502VT2P	VT2P	N	91	AC,P2
Thunder	T6389 VT2P	VT2P	Y	89	F,I
Thunder	T6490 VT2P	VT2P	Y	90	F,I
Thunder	T6588 AV	V	Y	88	F,I
Thunder	T6591 PC	PCE	Y	91	F,I
Thunder	T6592 VT2P	VT2P	Y	92	F,I
Viking Blue River	42-92	CONV	N	92	CM,C2
Viking Blue River	48-90	CONV	U	90	CM,C2

* FIRST does not inspect products for refuge blend. N* indicates the product was entered without a refuge component by the sponsoring seed company. Prior year entries may contain refuge blend.

2025 Corn - Minnesota West Central [MNWC]

Early-Season Test Products (42 Total)

Company/Brand	Product/Brand	Technology	RIB	RM	Seed Treat.
Anderson	747SSP	STXP	N	98	Treated
AP Select	AP 95-95 DGVT2P	VT2P	Y	95	NA
AP Select	AP 98-50 TRE	TRE	Y	98	NA
Augusta	A2244-DV	DV	Y	94	CM,C2
Augusta	A2246-CONV	CONV	N	96	CM,C5
Augusta	A3044-V-EZ	V	Y	94	CM,C2
Augusta	A3048-AA-EZ	AA	Y	98	CM,C5
Augusta	A4143-3110	3110	N	93	CM,C5
Dahlman	6096PCE	PCE	Y	96	F,I
Dahlman	R96-266TRE	TRE	Y	96	F,I
Dahlman	R98-360SSP	STXP	Y	98	F,I
Dairyland	DS-3548PCE	PCE	Y	95	Lum, L1
DeKalb	DKC098-88RIB	VT4P	Y	98	AC,P1V,EDC-EL
Enestvedt	E654	CONV	N	96	CM,C2,Vi,Va
Enestvedt	E660SS RIB	STX	Y	97	AC,P5
Enestvedt	E664	CONV	N	96	CM,C2,Vi,Va
Enestvedt	E665TRE	TRE	Y	97	AC,P2
Epley	E9615DV	DV	Y	96	Vi5
Epley	E9620	CONV	N	96	Vi5
Epley	E9850	CONV	N	98	Vi5
Jacobsen	JS9635	STXP	N	96	F,I
Jacobsen	JS9723TRE	TRE	Y	97	F,I
Jacobsen	JS9762 CONV	CONV	N	96	F,I
Jacobsen	JS9775	STXP	N	97	F,I
Jacobsen	JS9863	VT4P	Y	98	F,I
Pioneer	P9955V	VE	Y	99	Lum, L1
Prairie Hybrids	591	CONV	N	95	LumPro P2
Prairie Hybrids	731	CONV	N	96	LumPro P2
Renk	RK5518TRE	TRE	N	97	AC,P2
Renk	RK5522SSPRO	STXP	N	96	AC,P5V,EDC-EL
Renk	RK561DGVT2P	VT2PDG	Y*	95	AC,P2
Renk	RK582SSTX	STX	Y*	98	AC,P5V,EDC-EL
Rob-See-Co	RC4779-PCE	PCE	Y	97	CM,C2,Vi,Va
Rob-See-Co	RC4829-PCE	PCE	Y	98	CM,C2,Vi,Va
Thunder	T6294 VT2P	VT2PDG	Y	94	F,I
Thunder	T6498 PC	PCE	N	98	F,I

Company/Brand	Brand/Product	Technology	RIB	RM	Seed Treat.
Thunder	T6693 PC	PCE	Y	93	F,I
Thunder	T6695 VT2P	VT2P	Y	95	F,I
Thunder	T8696 SSP	STXP	Y	96	F,I
Titan Pro	41-96 SSP	STXP	Y	96	CM,C2,Vi,Va
Viking Blue River	44-98	CONV	N	98	CM,C2
Viking Blue River	73-97	CONV	N	97	CM,C2

* FIRST does not inspect products for refuge blend. N* indicates the product was entered without a refuge component by the sponsoring seed company. Prior year entries may contain refuge blend.

2025 Corn - Minnesota West Central [MNWC]

Full-Season Test Products (36 Total)

Company/Brand	Product/Brand	Technology	RIB	RM	Seed Treat.
Anderson	4501	CONV	N	100	Treated
Anderson	681SRC	STX	N	100	Treated
Augusta	A2252-D	D	Y*	102	CM,C2
Augusta	A2350-D	D	Y	100	CM,C2
Augusta	A2351-AA-EZ	AA	Y	101	CM,C2
Augusta	A3152-PWE	PCE	N	102	CM,C5
Augusta	A3350-DV	DV	Y	100	CM,C5
Dahlman	5102PCE	PCE	Y	102	F,I
Dahlman	R102-263TRE	TRE	Y	102	F,I
Dahlman	R50-252VT2PRIB	VT2P	Y	100	F,I
Dahlman	R52-254TRE	TRE	N*	102	F,I
Enestvedt	E535SS RIB	STX	Y	102	AC,P2
Jacobsen	JS0034SS	STX	Y	100	F,I
Jacobsen	JS0114	VT2P	Y	100	F,I
Jacobsen	JS0223 CONV	CONV	N	102	F,I
Jacobsen	JS0223VT2P	VT2P	Y	102	F,I
Jacobsen	JS0342DGV2P	VT2PDG	Y	102	F,I
Mustang	58J00 DV EZ	DV	N*	100	F,I
Pioneer	P9955V	VE	Y	99	Lum, L1
Prairie Hybrids	1556	CONV	N	101	AC,P5V,EDC-B
Prairie Hybrids	581	CONV	N	99	CM,C1,Vi,Va
Renk	RK583PCE	PCE	Y	99	Lum
Renk	RK586VT4PRO	VT4P	N	99	AC,P5V,EDC-EL
Renk	RK630TRE	TRE	N	102	AC,P2
Renk	RK6545PCE	PCE	N	102	Lum
Renk	RK6555VT4PRO	VT4P	N	102	AC,P5V,EDC-EL
Rob-See-Co	RC5209-D	D	Y	102	CM,C2,Vi,Va
Rob-See-Co	RC5263-PCE	PCE	Y	102	CM,C2,Vi,Va
Thunder	T6602 TRE	TRE	Y	102	F,I
Thunder	T6700 PC	PCE	Y	100	F,I
Thunder	T6902 VT2P	VT2P	Y	102	F,I
Thunder	T8502 DC	D	Y	102	F,I
Thunder	T8602 VT4P	VT4P	Y	102	F,I
Titan Pro	57-01 PCE	PCE	Y	101	CM,C2,Vi,Va
Viking Blue River	24-99	CONV	N	99	CM,C2
Viking Blue River	46-02	CONV	N	102	CM,C2

* FIRST does not inspect products for refuge blend. N* indicates the product was entered without a refuge component by the sponsoring seed company. Prior year entries may contain refuge blend.

Footnotes and Abbreviations Descriptions

Brand Footnotes

- CK Identifies a check product included in early- and full-season tests.
- GC Grower Comparison product included by FIRST when space permits.
- ^ Power Plus® brand seed is distributed by Burrus. Power Plus® is a registered trademark of Corteva Agriscience.

Corn Technologies

3110	Agrisure® Viptera® 3110 (Vip, CB,LL,GT)
AA	Agrisure® Above (CB,HX,LL,GT), formerly Agrisure® 3120
CONV	Conventional
D	Duracade™ (CB,HX,RW,RW2,LL,GT), formerly Agrisure Duracade® 5122
DV	DuracadeViptera™ (Vip,CB,HX,RW,RW2,LL,GT), formerly Agrisure Duracade® 5222
PCE	PowerCore® Enlist®
RR2	Roundup Ready® 2 Corn
STX	SmartStax®
STXP	SmartStax® Pro with RNAi Technology
TRE	Trecepta®
V	Viptera™ (Vip,CB,HX,LL,GT), formerly Agrisure Viptera® 3220
VE	Vorceed™ Enlist®
VT2P	VT Double PRO®
VT2PDG	DroughtGard® with VT Double PRO®
VT4P	VT4Pro™ with RNAi Technology

NOTE: The refuge component genetics may vary in a refuge blend seed product.

Corn Seed Treatments*

AC,P1V,EDC-EL	Acceleron® ELITE Poncho 1250/Votivo with Enhanced Disease Control
AC,P2	Acceleron® 250
AC,P5	Acceleron® 500
AC,P5V	Acceleron® Poncho 500/Votivo
AC,P5V,EDC-B	Acceleron® BASIC Poncho 500/Votivo with Enhanced Disease Control
AC,P5V,EDC-EL	Acceleron® ELITE Poncho 500/Votivo with Enhanced Disease Control
CM,C1,Vi,Va	CruiserMaxx® 1250 with Vibrance, Vayantis®
CM,C2	CruiserMaxx® 250
CM,C2,Vi,Va	CruiserMaxx® 250 with Vibrance, Vayantis®
CM,C5	Cruisermaxx® 500
F,I	Fungicide, Insecticide
Lum	LumiGEN™ (Corteva Agriscience)
Lum, L1	LumiGEN, Lumisure 1250
LumPro P2	Lumiscend Pro /Lumiflex fungicide, L-2012R bio-fungicide, Lumisure 250/Lumivia250 insecticide, Lumialza nematicide
Treated	Treated seed, unspecified
Vi5	Vibrance® Cinco

* Seed treatments may include unspecified plant health promoting components.