

Test by: F.I.R.S.T. AMC Inc. Mount Carroll, IL

## 2025 Corn Grain Top 30 Harvest Report

Illinois North [ILNO] SENECA, IL

Dave Thorsen, Grundy County, IL

<b>Ultra Early-Season Test</b>	<b>101 - 106</b> Day CRM B2025ILNO13u
<b>Top 30 of 35</b>	For Gross Income (Sorted by Yield) Average of <b>(3)</b> Replications
<b>PREV. CROP/HERB:</b>	Corn / Verdict, Roundup (3), Zidua Sc, Liberty (2)
<b>SOIL DESCRIPTION:</b>	Muscature silt loam, mod. well drained, non-irrigated
<b>SOIL CONDITION:</b>	Conventional W/ Fall Till, 5.72 pH, 4.71% OM, 22.75 CEC, high P, high K, low S, mod. B, high Zn
<b>PEST MANAGEMENT:</b>	Storen, Aatrex, Sequence, Status, Headline Sc, Veltyma, Miravis Neo, Hero, Fence
<b>FERTILITY - Applied N:</b>	199 Fall, 70 Spring, 56 Sidedress, 37 units sulfur
<b>Applied N-P-K (units):</b>	325-44-84
<b>SEEDED - RATE - ROW:</b>	May 9 35.5 /A 30" spacing
<b>HARVESTED - STAND:</b>	Sep 30 34.0 /A
<b>PEST &amp; DISEASE RISK:</b>	Pythium, Diplodia Ear Rot*

### TEST COMMENTS:

Planting conditions were outstanding in this area, leading to excellent emergence despite low initial soil moisture. This location saw 4.3" of rainfall from emergence to V6, and cooler temperatures through late June helped tremendously with plant stress. Pollination and ear development were great throughout the plot. The stalk quality was excellent and very small amounts of lodging were noted. The fungicide applications were effective in this field as only small amounts of foliar disease were present. Some ear rot was seen in some of the early-season hybrids but it was very sporadic in the location. As a whole, this was a very nice location under excellent management and it's a great representation for this growing area.

Company/Brand	Product/Brand	Technol.†	RM	Yield Bu/A ↓	Moisture %	Lodging %	Stand (x 1000)	Gross Income \$/Acre	Rank
Channel	206-47VT4PRIB ↗	VT4P	106	<b>279.9</b>	22.7	2	32.2	1114	3
NuTech	63A7V ↗	VE	103	<b>279.5</b>	17.8	2	33.0	1160	1
ProHarvest	75P85 DGVT2PRIB GC ↗	VT2PDG	105	<b>276.2</b>	24.2	2	34.8	1085	9
Burrus	POWER PLUS 3H48 VE ↗	VE	106	<b>275.7</b>	20.2	2	33.9	1121	2
AgVenture	AV9506V ↗	VE	106	<b>273.8</b>	20.8	4	34.8	1108	5
Channel	205-08SSPRIB ↗	STXP	105	<b>273.2</b>	23.2	3	33.9	1083	10
AgVenture	AV3904V ↗	VE	104	272.7	21.3	2	33.1	1099	6
Sun Prairie	SP2380PWE GC ↗	PCE	104	271.1	24.1	1	34.8	1066	17
Burrus	POWER PLUS 3G31AM ↗	AM	106	270.6	23.0	3	34.8	1075	15
FS InVision	FS 5552F RIB ↗	VT4P	105	269.3	29.2	2	33.9	1010	27
Wyffels	W4439RIB ↗	STXP	106	268.2	20.6	1	34.8	1087	8
Wyffels	W4514 ↗	PCE	106	266.6	21.1	2	32.2	1076	12
FS InVision	FS 5335P RIB ↗	STXP	103	266.4	20.3	1	32.2	1083	11
NuTech	65B8V ↗	VE	105	265.9	18.9	3	33.9	1093	7
Pioneer	P05737V GC ↗	VE	105	265.7	20.8	1	32.2	1076	13
NuTech	66C2PCE ↗	PCE	106	265.2	25.5	1	34.8	1029	25
FS InVision	FS 5559PC RA ↗	PCE	105	264.6	24.7	1	34.8	1035	23
FS InVision	FS 5158V RIB ↗	VT2P	101	264.5	20.4	1	34.8	1074	16
NuTech	60B8V ↗	VE	100	264.1	16.1	1	34.8	1112	4
LG Seeds	LG55C40TRC ↗	TRE	105	261.3	20.7	10	33.9	1058	19
Wyffels	W3309RIB ↗	STXP	103	260.5	18.4	2	33.9	1076	14
FS InVision	FS 5555P RIB ↗	STXP	105	259.7	19.5	2	34.8	1063	18
Wyffels	W3654 ↗	PCE	104	259.6	20.0	2	34.8	1058	20
Sun Prairie	SPX5325 PWE GC ↗	PCE	103	259.0	21.2	1	33.9	1045	22
Renk	RK7577TRE ↗	TRE	104	258.8	20.9	4	33.9	1047	21
Renk	RK703PCE ↗	PCE	106	255.5	24.6	1	33.9	1000	28
Pioneer	P03115V GC ↗	VE	103	249.0	17.8	1	33.9	1034	24
Channel	202-43VT4PRIB ↗	VT4P	102	248.8	22.1	5	34.8	995	29
NuTech	61A5V ↗	VE	101	247.5	18.3	1	33.9	1023	26
Renk	RK630TRE ↗	TRE	102	246.7	22.8	4	34.8	981	30

	Averages =	<b>261.6</b>	<b>21.9</b>	<b>2</b>	<b>34.0</b>	<b>1048</b>
	LSD (0.10) =	11.2	1.0	2		
	LSD (0.25) =	5.9	0.5	1		
	C.V. =	4.1				
Nathan Roux						Historic yield: new site
nathan.g.roux@gmail.com, (815) 716-3794						

**Yield & Income Factors:** Base Moisture = 15.0% Shrink = 1.3 Drying = \$0.035 Prices: GMO = \$4.25

Report Date: Sept. 30, 2025

Revised: 10/09/2025 Changed previous crop to Corn

Additional reports available at [www.firstseedtests.com](http://www.firstseedtests.com)

† See last page for abbreviation descriptions. Dark colored row identifies the check product found in early- and full-season tests. **Bold** yields are significantly above test average by LSD(0.10). **Italicized** brands exceed the grain moisture limit for this test. **ns** = column values not significantly different. \*[Earthoptics](#) used for soil conditions and soil-borne disease & pest risks. ↗ Links to full product yield results at [www.firstseedtests.com](http://www.firstseedtests.com).

©2025, All rights reserved to Farmers' Independent Research of Seed Technologies, LLC.

Test by: F.I.R.S.T. AMC Inc. Mount Carroll, IL

## 2025 Corn Grain Top 30 Harvest Report

Illinois North [ILNO] SENECA, IL

Dave Thorsen, Grundy County, IL

<b>Early-Season Test</b>	<b>107 - 110</b> Day CRM B2025ILNO13a
<b>Top 30 of 45</b>	For Gross Income (Sorted by Yield) Average of <b>(3)</b> Replications
<b>PREV. CROP/HERB:</b>	Corn / Verdict, Roundup (3), Zidua Sc, Liberty (2)
<b>SOIL DESCRIPTION:</b>	Muscature silt loam, mod. well drained, non-irrigated
<b>SOIL CONDITION:</b>	Conventional W/ Fall Till, 5.72 pH, 4.71% OM, 22.75 CEC, high P, high K, low S, mod. B, high Zn
<b>PEST MANAGEMENT:</b>	Storen, Aatrex, Sequence, Status, Headline Sc, Veltyma, Miravis Neo, Hero, Fence
<b>FERTILITY - Applied N:</b>	199 Fall, 70 Spring, 56 Sidedress, 37 units sulfur
<b>Applied N-P-K (units):</b>	325-44-84
<b>SEEDED - RATE - ROW:</b>	May 9 35.5 /A 30" spacing
<b>HARVESTED - STAND:</b>	Sep 30 34.3 /A
<b>PEST &amp; DISEASE RISK:</b>	Pythium, Diplodia Ear Rot*

### TEST COMMENTS:

Planting conditions were outstanding in this area, leading to excellent emergence despite low initial soil moisture. This location saw 4.3" of rainfall from emergence to V6, and cooler temperatures through late June helped tremendously with plant stress. Pollination and ear development were great throughout the plot. The stalk quality was excellent and very small amounts of lodging were noted. The fungicide applications were effective in this field as only small amounts of foliar disease were present. Some ear rot was seen in some of the early-season hybrids but it was very sporadic in the location. As a whole, this was a very nice location under excellent management and it's a great representation for this growing area.

Company/Brand	Product/Brand	Technol.†	RM	Yield Bu/A ↓	Moisture %	Lodging %	Stand (x 1000)	Gross Income \$/Acre	Rank
Channel	209-25SSPRIB ↗	STXP	109	<b>298.3</b>	18.3	1	33.9	1234	1
AgVenture	AV3310V ↗	VE	110	<b>294.3</b>	22.1	5	33.9	1177	4
Cornelius	C6856SSP ↗	STXP	108	<b>292.5</b>	20.1	3	34.8	1191	2
Cornelius	C6937SSP ↗	STXP	109	<b>292.2</b>	22.1	1	33.9	1169	5
AgVenture	AV4607PCE ↗	PCE	107	<b>291.2</b>	20.1	2	33.1	1186	3
ProHarvest	79P54 STAXPRO ↗	STXP	109	<b>291.0</b>	23.0	3	34.8	1155	6
Channel	207-34SSPRIB ↗	STXP	107	284.1	23.0	1	33.1	1128	9
Burrus	POWER PLUS 4V73AM ↗	AM	109	282.4	27.3	1	33.9	1079	17
Renk	RK766SSPRO ↗	STXP	109	281.4	22.5	1	34.8	1122	10
NuTech	69C7PCE ↗	PCE	109	280.9	27.7	5	34.8	1069	21
NuTech	69F3V ↗	VE	109	279.2	19.9	1	33.9	1139	8
Wyffels	W5129 ↗	STXP	108	279.0	23.1	2	33.9	1107	12
FS InVision	FS 5845P RIB ↗	STXP	108	279.0	24.7	1	33.9	1091	15
Brevant	B08R32V GC ↗	VE	108	278.8	23.6	1	34.8	1101	13
LG Seeds	LG58C16VT2P ↗	VT2P	108	277.8	30.5	4	33.9	1030	29
Wyffels	W6505RIB ↗	TRE	110	277.4	26.3	2	33.9	1070	19
AgVenture	AV2208V ↗	VE	108	276.9	24.4	1	33.9	1086	16
Renk	RK785PCE ↗	PCE	109	275.2	21.1	1	33.9	1111	11
Channel	207-70TRERIB GC ↗	TRE	107	273.7	27.1	1	34.8	1047	27
ProHarvest	80P75 PCE ↗	PCE	110	273.3	29.4	1	34.8	1024	30
Wyffels	W6479RIB ↗	STXP	110	272.9	25.5	1	33.9	1060	23
Pioneer	P08075V GC ↗	VE	108	272.4	20.9	1	34.8	1101	14
Renk	RK7590SSPRO ↗	STXP	109	272.4	23.3	1	33.9	1078	18
Channel	210-18SSPRIB ↗	STXP	110	271.8	25.3	4	33.9	1057	24
NuTech	69B5V ↗	VE	109	270.8	25.7	1	34.8	1050	26
AgVenture	AV5710PCE ↗	PCE	110	270.1	23.8	6	34.8	1065	22
NuTech	68C1V ↗	VE	108	269.7	24.6	2	33.1	1055	25
ProHarvest	78P95 PCE ↗	PCE	108	269.5	25.8	1	34.8	1044	28
Cornelius	C6757PCE ↗	PCE	107	269.4	22.9	1	33.0	1070	20
FS InVision	FS 5949PC RA ↗	PCE	109	264.0	26.8	2	33.9	1013	31
<b>PIONEER</b>	<b>P1185Q CK</b>	<b>QR</b>	<b>111</b>	<b>282.0</b>	<b>20.8</b>	<b>1</b>	<b>33.9</b>	<b>1141</b>	<b>7</b>
				Averages =	<b>272.4</b>	<b>25.7</b>	<b>2</b>	<b>34.3</b>	<b>1057</b>
				LSD (0.10) =	12.9	1.4	ns		
				LSD (0.25) =	6.8	0.7	ns		
				C.V. =	4.5				
				Historic yield: new site					

### Yield & Income Factors:

Base Moisture = 15.0%

Shrink = 1.3

Drying = \$0.035

Prices: GMO = \$4.25

Report Date: Sept. 30, 2025

Revised: 10/09/2025 Changed previous crop to Corn

Additional reports available at [www.firstseedtests.com](http://www.firstseedtests.com)

† See last page for abbreviation descriptions. Dark colored row identifies the check product found in early- and full-season tests. **Bold** yields are significantly above test average by LSD(0.10). **Italicized** brands exceed the grain moisture limit for this test. **ns** = column values not significantly different. \*[Earthoptics](http://Earthoptics) used for soil conditions and soil-borne disease & pest risks. ↗ Links to full product yield results at [www.firstseedtests.com](http://www.firstseedtests.com).

©2025, All rights reserved to Farmers' Independent Research of Seed Technologies, LLC.

Test by: F.I.R.S.T. AMC Inc. Mount Carroll, IL

## 2025 Corn Grain Top 30 Harvest Report

Illinois North [ILNO] SENECA, IL

Dave Thorsen, Grundy County, IL

<b>Full-Season Test</b>	<b>111 - 115</b> Day CRM B2025ILNO13b
<b>Top 30 of 54</b>	For Gross Income (Sorted by Yield) Average of <b>(3)</b> Replications
<b>PREV. CROP/HERB:</b>	Corn / Verdict, Roundup (3), Zidua Sc, Liberty (2)
<b>SOIL DESCRIPTION:</b>	Muscature silt loam, mod. well drained, non-irrigated
<b>SOIL CONDITION:</b>	Conventional W/ Fall Till, 5.72 pH, 4.71% OM, 22.75 CEC, high P, high K, low S, mod. B, high Zn
<b>PEST MANAGEMENT:</b>	Storen, Aatrex, Sequence, Status, Headline Sc, Veltyma, Miravis Neo, Hero, Fence
<b>FERTILITY - Applied N:</b>	199 Fall, 70 Spring, 56 Sidedress, 37 units sulfur
<b>Applied N-P-K (units):</b>	325-44-84
<b>SEEDED - RATE - ROW:</b>	May 9 35.5 /A 30" spacing
<b>HARVESTED - STAND:</b>	Sep 30 34.3 /A
<b>PEST &amp; DISEASE RISK:</b>	Pythium, Diplodia Ear Rot*

### TEST COMMENTS:

Planting conditions were outstanding in this area, leading to excellent emergence despite low initial soil moisture. This location saw 4.3" of rainfall from emergence to V6, and cooler temperatures through late June helped tremendously with plant stress. Pollination and ear development were great throughout the plot. The stalk quality was excellent and very small amounts of lodging were noted. The fungicide applications were effective in this field as only small amounts of foliar disease were present. Some ear rot was seen in some of the early-season hybrids but it was very sporadic in the location. As a whole, this was a very nice location under excellent management and it's a great representation for this growing area.

Company/Brand	Product/Brand	Technol.†	RM	Yield Bu/A ↓	Moisture %	Lodging %	Stand (x 1000)	Gross Income \$/Acre	Rank
Renk	RK889PCE ↗	PCE	113	<b>308.1</b>	24.2	1	34.8	1211	1
Renk	RK825VT4PRO ↗	VT4P	112	<b>301.1</b>	25.4	1	34.8	1170	2
DeKalb	DKC113-03RIB GC ↗	STXP	113	<b>293.0</b>	29.6	1	33.9	1095	9
Purple Ribbon	25A12 ↗	TRE	112	<b>291.7</b>	23.4	2	34.8	1154	3
Purple Ribbon	25P11 ↗	PCE	111	<b>285.7</b>	23.2	1	34.8	1132	5
Cornelius	C7342SSP ↗	STXP	113	<b>285.1</b>	23.0	1	34.8	1132	6
FS InVision	FS 6447T RIB ↗	TRE	114	<b>281.5</b>	28.3	1	33.1	1065	14
Renk	RK8585TRE ↗	TRE	114	<b>280.8</b>	26.3	1	34.8	1082	12
Channel	213-53SSPRIB ↗	STXP	113	<b>280.2</b>	19.6	2	33.9	1145	4
Purple Ribbon	26A14 ↗	TRE	114	<b>279.9</b>	29.5	3	33.1	1048	18
DeKalb	DKC112-12RIB GC ↗	TRE	112	277.1	24.5	2	33.9	1085	11
Wyffels	W6886RIB ↗	VT2P	111	276.7	24.2	2	33.9	1087	10
Pioneer	P13777V GC ↗	VE	113	275.5	21.9	1	33.9	1104	8
NuTech	71B6PCE ↗	PCE	111	274.5	21.0	1	33.9	1109	7
Wyffels	W7424 ↗	PCE	112	274.4	23.8	2	33.9	1081	13
Pioneer	P14830Q GC ↗	QR	114	272.4	26.1	1	34.8	1052	16
Cornelius	C7216VT4P ↗	VT4P	112	271.5	26.0	1	34.8	1049	17
Channel	211-14SSPRIB ↗	STXP	111	270.8	27.0	2	33.9	1037	20
Purple Ribbon	25P12 ↗	PCE	112	270.5	24.7	2	33.9	1058	15
Brevant	B14C59V GC ↗	VE	115	269.6	26.7	2	34.8	1035	21
AgVenture	AV6115PCE ↗	PCE	115	268.9	26.9	5	33.9	1031	22
Renk	RK832SSPRO ↗	STXP	113	268.4	28.9	2	33.9	1010	26
NuTech	71A7V ↗	VE	111	267.6	27.8	1	34.8	1018	24
AgVenture	AV4112PCE ↗	PCE	112	266.1	27.2	6	33.9	1017	25
Burrus	POWER PLUS 6G88 VE ↗	VE	113	264.5	27.4	1	33.9	1009	27
FS InVision	FS 6245V RIB ↗	VT2P	112	264.0	27.9	1	33.9	1002	29
NuTech	72C1PCE ↗	PCE	112	260.2	24.1	2	33.9	1023	23
FS InVision	FS 6545V RIB ↗	VT2P	115	259.6	27.5	1	34.8	989	31
AgVenture	AV5813V ↗	VE	113	257.8	25.9	1	34.8	997	30
AgVenture	AV9511PCE ↗	PCE	111	257.4	20.1	1	33.9	1048	19
PIONEER	P1185Q CK	QR	111	252.2	22.8	1	33.9	1003	28
				<b>Averages =</b>	<b>264.9</b>	<b>27.3</b>	<b>2</b>	<b>34.3</b>	<b>1013</b>
				<b>LSD (0.10) =</b>	12.3	2.1	2		
				<b>LSD (0.25) =</b>	6.4	1.1	1		
				<b>C.V. =</b>	4.4				
				Historic yield: new site					

### Yield & Income Factors:

Base Moisture = 15.0%

Shrink = 1.3

Drying = \$0.035

Prices: GMO = \$4.25

Report Date: Sept. 30, 2025

Revised: 10/09/2025 Changed previous crop to Corn

Additional reports available at [www.firstseedtests.com](http://www.firstseedtests.com)

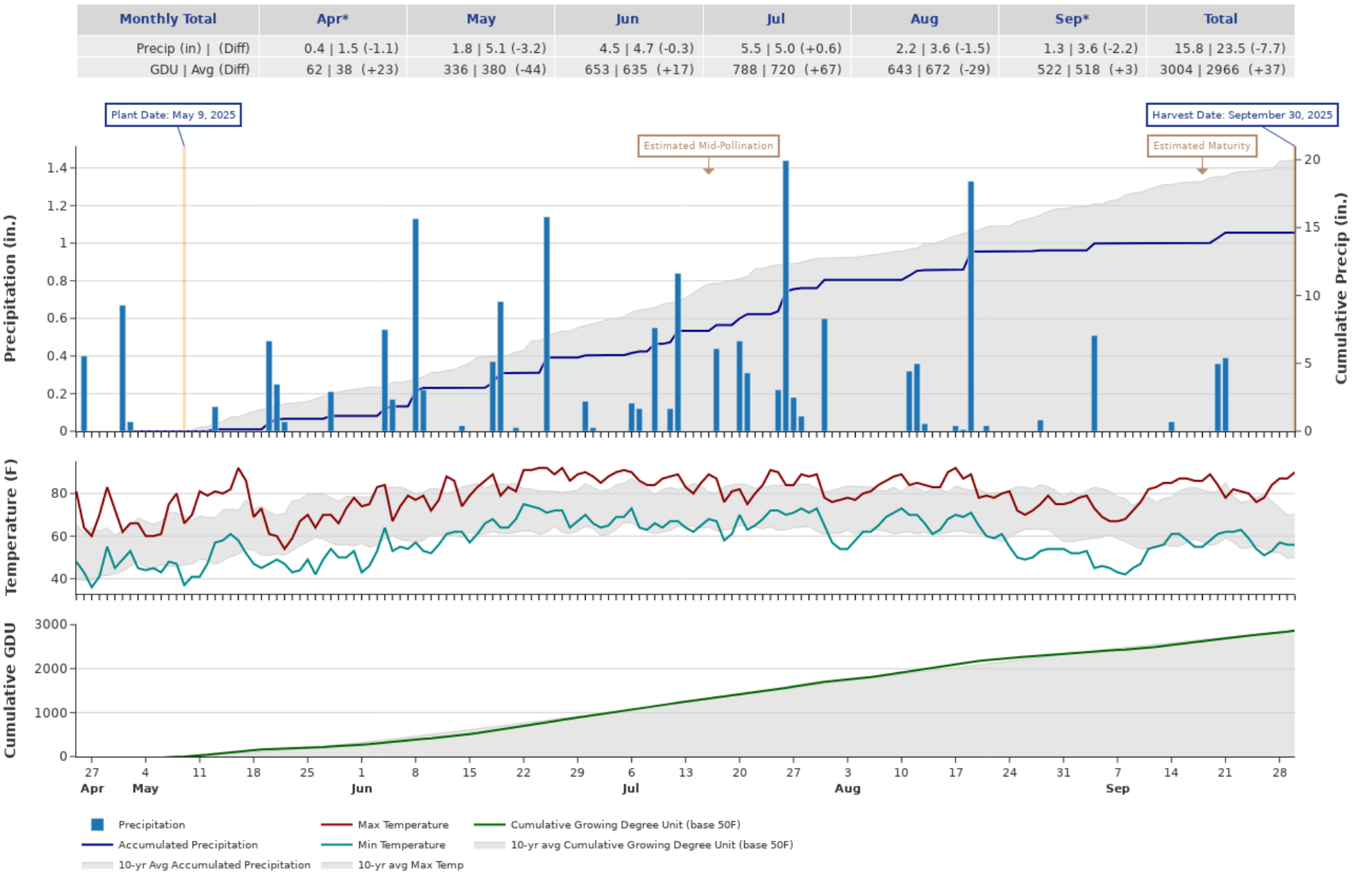
† See last page for abbreviation descriptions. Dark colored row identifies the check product found in early- and full-season tests. **Bold** yields are significantly above test average by LSD(0.10). **Italicized** brands exceed the grain moisture limit for this test. **ns** = column values not significantly different. \*[Earthoptics](http://Earthoptics) used for soil conditions and soil-borne disease & pest risks. ↗ Links to full product yield results at [www.firstseedtests.com](http://www.firstseedtests.com).

©2025, All rights reserved to Farmers' Independent Research of Seed Technologies, LLC.

2025 Corn - Illinois North [ ILNO ]

Weather Conditions Summary at SENECA, IL

Weather Data Retrieved: 10/09/2025

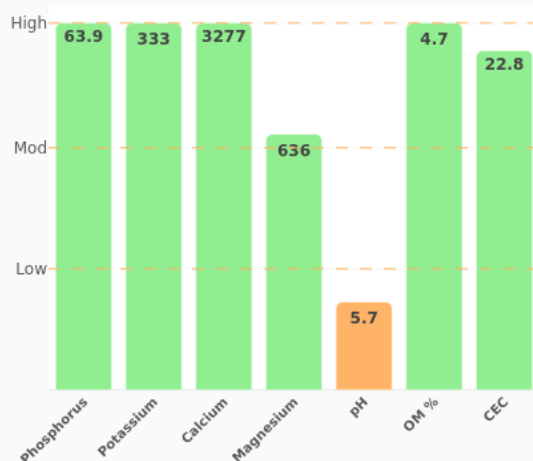


\* First monthly total starts on the date 14 days prior to planting and final monthly total ends on the harvest date.

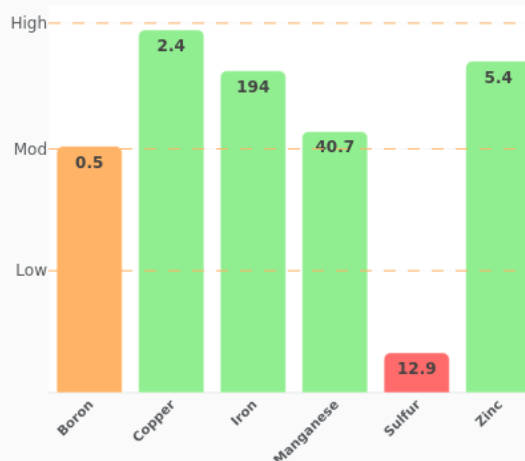
Note: Weather information from PRISM Climate Group. Data may be revised by the provider after retrieval. FIRST will not revise or update reports to reflect any weather data changes. For information purposes only.



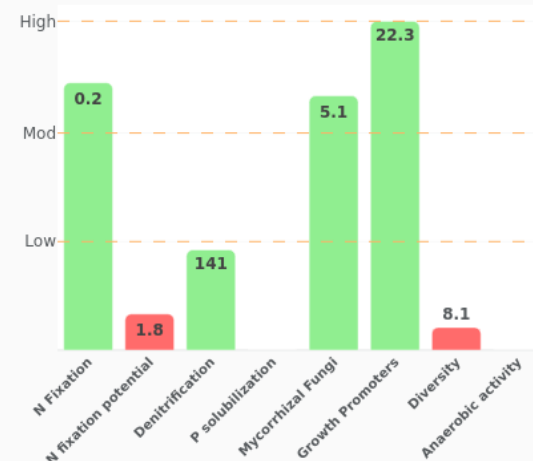
### Macronutrients



### Micronutrients



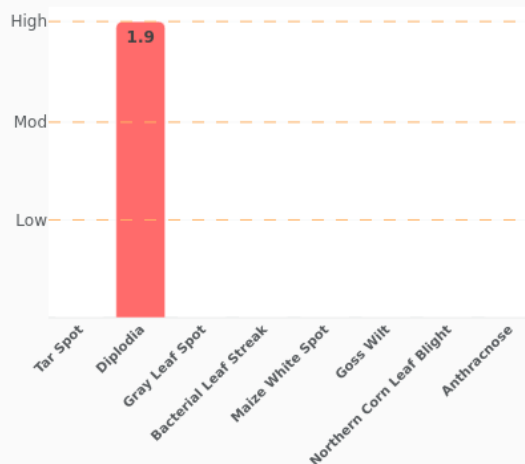
### Biofertility Analytics



### Below Ground Pest & Disease - Corn



### Above Ground Pest & Disease - Corn



### More Information

You can find more information about the EarthOptics and soil analytics reported at the following links:

- [Reported Analytics Descriptions](#)
- [Soil Nutrients & Fertility](#)
- [Analytics & Insights](#)
- [EarthOptics](#)

## 2025 Corn - Illinois North [ ILNO ]

### Ultra Early-Season Test Products (35 Total)

Company/Brand	Product/Brand	Technology	RIB	RM	Seed Treat.
AgVenture	AV3904V	VE	Y	104	Lum, L1
AgVenture	AV9506V	VE	Y	106	Lum, L1
Burrus	POWER PLUS 3G31AM	AM	Y	106	BPS
Burrus	POWER PLUS 3H48 VE	VE	Y	106	Lum, L1
Channel	202-43VT4PRIB	VT4P	Y	102	AC,P1V,EDC-EL
Channel	205-08SSPRIB	STXP	Y	105	AC,P5V,EDC-EL
Channel	206-47VT4PRIB	VT4P	Y	106	AC,P1V,EDC-EL
FS InVision	FS 5158V RIB	VT2P	Y	101	AC,P5V,EDC-EL
FS InVision	FS 5335P RIB	STXP	Y	103	P5V
FS InVision	FS 5552F RIB	VT4P	Y	105	AC,P5V,EDC-EL
FS InVision	FS 5555P RIB	STXP	Y	105	AC,P5V,EDC-EL
FS InVision	FS 5559PC RA	PCE	Y	105	CM,C2,Vi,Va
LG Seeds	LG55C40TRC	TRE	N	105	AC,P5V
Merschman	2506C-30	PCE	Y	106	SL
NuTech	60B8V	VE	Y	100	Lum, L1
NuTech	61A5V	VE	Y	101	Lum, L1
NuTech	63A7V	VE	Y	103	Lum, L1
NuTech	65B8V	VE	Y	105	Lum, L1
NuTech	66C2PCE	PCE	Y	106	Lum, L1
Pioneer	P02405V	VE	Y	102	Lum, L1
Pioneer	P03115V	VE	Y	103	Lum, L1
Pioneer	P05737V	VE	Y	105	Lum, L1
ProHarvest	75P85 DGVT2PRIB	VT2PDG	Y*	105	AC,P5V,EDC-EL
Renk	RK625DGVT2P	VT2PDG	Y*	104	AC,P2
Renk	RK630TRE	TRE	N	102	AC,P2
Renk	RK703PCE	PCE	Y*	106	Lum
Renk	RK705VT4PRO	VT4P	N	105	AC,P5V,EDC-EL
Renk	RK7577TRE	TRE	N	104	AC,P2
Sun Prairie	SP2380PWE	PCE	Y	104	AC
Sun Prairie	SPX5325 PWE	PCE	Y	103	AC
Wyffels	W3309RIB	STXP	Y*	103	CM,C2,Vi,Va
Wyffels	W3654	PCE	N	104	CM,C2,Vi,Va
Wyffels	W4439RIB	STXP	Y	106	CM,C2,Vi,Va
Wyffels	W4487	VT4P	N	106	CM,C2,Vi,Va
Wyffels	W4514	PCE	N	106	CM,C2,Vi,Va

\* FIRST does not inspect products for refuge blend. N\* indicates the product was entered without a refuge component by the sponsoring seed company. Prior year entries may contain refuge blend.



## 2025 Corn - Illinois North [ ILNO ]

### Early-Season Test Products (45 Total)

Company/Brand	Product/Brand	Technology	RIB	RM	Seed Treat.
AgVenture	AV1009PCE	PCE	Y	109	Lum, L1
AgVenture	AV2208V	VE	Y	108	Lum, L1
AgVenture	AV3310V	VE	Y	110	Lum, L1
AgVenture	AV4607PCE	PCE	Y	107	Lum, L1
AgVenture	AV5710PCE	PCE	Y	110	Lum, L1
Brevant	B08R32V	VE	Y	108	Lum, L1
Burrus	POWER PLUS 4V73AM	AM	Y	109	BPS
Channel	207-34SSPRIB	STXP	Y	107	AC,P5V,EDC-EL
Channel	207-70TRERIB	TRE	Y	107	AC,P5V,EDC-EL
Channel	209-25SSPRIB	STXP	Y	109	AC,P5V,EDC-EL
Channel	210-18SSPRIB	STXP	Y	110	AC,P5V,EDC-EL
Cornelius	C6757PCE	PCE	N	107	AC,P5V,Va
Cornelius	C6856SSP	STXP	N	108	AC,P5V,EDC-EL
Cornelius	C6937SSP	STXP	N	109	AC,P5
Cornelius	C7026PCE	PCE	N	110	Lum, L1
DeKalb	DKC108-64RIB	STXP	Y	108	AC,P5V,EDC-EL
FS InVision	FS 5845P RIB	STXP	Y	108	AC,P5V,Va
FS InVision	FS 5947T RIB	TRE	Y	109	AC,P5V,Va
FS InVision	FS 5949PC RA	PCE	Y	109	AC,P5V,Va
FS InVision	FS 6042F RIB	VT4P	Y	110	AC,P5V,Va
LG Seeds	LG58C16VT2P	VT2P	Y	108	AC,P5V
LG Seeds	LG60C24VT4P	VT4P	Y	110	AC,P5V
Merschman	2408C-30	PCE	Y	108	SL
Mustang	69Z08 SS PRO RIB	STXP	N	108	F,I
NuTech	68C1V	VE	Y	108	Lum, L1
NuTech	69B5V	VE	Y	109	Lum, L1
NuTech	69C7PCE	PCE	Y	109	Lum, L1
NuTech	69F3V	VE	Y	109	Lum, L1
NuTech	69G1PCE	PCE	Y	109	Lum, L1
Pioneer	P08075V	VE	Y	108	Lum, L1
Pioneer	P1185Q	QR	Y	111	Lum, L1
ProHarvest	78P95 PCE	PCE	Y	108	CM,C2,Vi
ProHarvest	79P54 STAXPRO	STXP	Y	109	AC,P5V,EDC-EL
ProHarvest	80P75 PCE	PCE	Y	110	CM,C2,Vi
Purple Ribbon	26A09	TRE	N	109	P5V
Renk	RK7590SSPRO	STXP	N	109	AC,P5V,EDC-EL

Company/Brand	Brand/Product	Technology	RIB	RM	Seed Treat.
Renk	RK766SSPRO	STXP	Y*	109	AC,P5V,EDC-EL
Renk	RK773TRE	TRE	Y*	109	AC,P2
Renk	RK785PCE	PCE	N	109	Lum
Renk	RK800VT4PRO	VT4P	N	110	AC,P5V,EDC-EL
Titan Pro	59-08 PCE	PCE	Y	108	CM,C2,Vi,Va
Wyffels	W5129	STXP	N	108	P5V
Wyffels	W5684	PCE	N	108	CM,C2,Vi,Va
Wyffels	W6479RIB	STXP	Y*	110	CM,C2,Vi,Va
Wyffels	W6505RIB	TRE	Y*	110	CM,C2,Vi,Va

\* FIRST does not inspect products for refuge blend. N\* indicates the product was entered without a refuge component by the sponsoring seed company. Prior year entries may contain refuge blend.

## 2025 Corn - Illinois North [ ILNO ]

### Full-Season Test Products (54 Total)

Company/Brand	Product/Brand	Technology	RIB	RM	Seed Treat.
AgVenture	AV4112PCE	PCE	Y	112	Lum, L1
AgVenture	AV4713PCE	PCE	Y	113	Lum, L1
AgVenture	AV5813V	VE	Y	113	Lum, L1
AgVenture	AV6115PCE	PCE	Y	115	Lum, L1
AgVenture	AV9511PCE	PCE	Y	111	Lum, L1
Brevant	B14C59V	VE	Y	115	Lum, L1
Burrus	POWER PLUS 6G88 VE	VE	Y	113	Lum, L1
Channel	211-14SSPRIB	STXP	Y	111	AC,P5V,EDC-EL
Channel	212-63VT4PRIB	VT4P	Y	112	AC,P1V,EDC-EL
Channel	213-53SSPRIB	STXP	Y	113	AC,P5V,EDC-EL
Cornelius	C7120TRE	TRE	N	111	AC,P5V,EDC-EL
Cornelius	C7216VT4P	VT4P	N	112	CM,C2,Vi,Va
Cornelius	C7342SSP	STXP	N	113	P5V,Lu
Cornelius	C7399PCE	PCE	N	113	CM,C2,Vi,Va
DeKalb	DKC112-12RIB	TRE	Y	112	AC,P5V,EDC-EL
DeKalb	DKC113-03RIB	STXP	Y	113	AC,P5V,EDC-EL
DeKalb	DKC115-55RIB	TRE	Y	115	AC,P5V,EDC-EL
FS InVision	FS 6245V RIB	VT2P	Y	112	AC,P5V,Va
FS InVision	FS 6349PC RA	PCE	Y	113	AC,P5V,Va
FS InVision	FS 6432P RIB	STXP	Y	114	AC,P5V,Va
FS InVision	FS 6447T RIB	TRE	Y	114	AC,P5V,Va
FS InVision	FS 6545V RIB	VT2P	Y	115	AC,P5V,Va
LG Seeds	LG62C20D-RN	D	Y	112	AGM
LG Seeds	LG62C73VT2RIB	VT2P	Y	112	AC,P5V
LG Seeds	LG63C32TRC	TRE	Y	113	AC,P5V
Merschman	2411C-30	PCE	Y	111	SL
Merschman	2512C-30	PCE	Y	112	SL
NuTech	71A7V	VE	Y	111	Lum, L1
NuTech	71B6PCE	PCE	Y	111	Lum, L1
NuTech	72C1PCE	PCE	Y	112	Lum, L1
NuTech	73B2V	VE	Y	113	Lum, L1
NuTech	73J1V	VE	Y	113	Lum, L1
Pioneer	P1185Q	QR	Y	111	Lum, L1
Pioneer	P13777V	VE	Y	113	Lum, L1
Pioneer	P14830Q	QR	Y	114	Lum, L1
ProHarvest	81P45 TRE	TRE	Y	111	AC,P5V,EDC-B

Company/Brand	Brand/Product	Technology	RIB	RM	Seed Treat.
ProHarvest	82P96 PCE	PCE	Y	112	CM,C2,Vi
ProHarvest	83P48 STAXPRO	STXP	Y	113	AC,P5V,EDC-EL
ProHarvest	83P66 VT2PRIB	VT2P	Y*	113	AC,P5V,EDC-EL
ProHarvest	84P78 TRERIB	TRE	Y	114	AC,P5V,EDC-EL
Purple Ribbon	25A12	TRE	N	112	AC,P5
Purple Ribbon	25P11	PCE	N	111	CM,C2,Vi5
Purple Ribbon	25P12	PCE	N	112	CM,C2,Vi5
Purple Ribbon	26A14	TRE	N	114	AC,P5V
Renk	RK825VT4PRO	VT4P	N	112	AC,P5V,EDC-EL
Renk	RK832SSPRO	STXP	Y*	113	AC,P5V,EDC-EL
Renk	RK8585TRE	TRE	N	114	AC,P2
Renk	RK889PCE	PCE	Y	113	Lum
Titan Pro	40-13 PCE	PCE	Y	113	CM,C2,Vi,Va
Wyffels	W6886RIB	VT2P	Y*	111	CM,C2,Vi,Va
Wyffels	W7424	PCE	N	112	CM,C2,Vi,Va
Wyffels	W7485RIB	TRE	Y*	112	CM,C2,Vi,Va
Wyffels	W7499RIB	STXP	Y*	112	CM,C2,Vi,Va
Wyffels	W8007	VT4P	N	114	P5V

\* FIRST does not inspect products for refuge blend. N\* indicates the product was entered without a refuge component by the sponsoring seed company. Prior year entries may contain refuge blend.



## Footnotes and Abbreviations Descriptions

### Brand Footnotes

---

CK	Identifies a check product included in early- and full-season tests.
GC	Grower Comparison product included by FIRST when space permits.
^	Power Plus® brand seed is distributed by Burrus. Power Plus® is a registered trademark of Corteva Agriscience.

### Corn Technologies

---

AM	Optimum® AcreMax®
D	Duracade™ (CB,HX,RW,RW2,LL,GT), formerly Agrisure Duracade® 5122
PCE	PowerCore® Enlist®
QR	Qrome®
STXP	SmartStax® Pro with RNAi Technology
TRE	Trecepta®
VE	Vorceed™ Enlist®
VT2P	VT Double PRO®
VT2PDG	DroughtGard® with VT Double PRO®
VT4P	VT4Pro™ with RNAi Technology

---

NOTE: The refuge component genetics may vary in a refuge blend seed product.

### Corn Seed Treatments\*

---

AC	Acceleron® unspecified
AC,P1V,EDC-EL	Acceleron® ELITE Poncho 1250/Votivo with Enhanced Disease Control
AC,P2	Acceleron® 250
AC,P5	Acceleron® 500
AC,P5V	Acceleron® Poncho 500/Votivo
AC,P5V,EDC-B	Acceleron® BASIC Poncho 500/Votivo with Enhanced Disease Control
AC,P5V,EDC-EL	Acceleron® ELITE Poncho 500/Votivo with Enhanced Disease Control
AC,P5V,Va	Acceleron® Poncho 500/Votivo, Vayantis®
AGM	AgriShield Max
BPS	Burrus PowerShield
CM,C2,Vi	CruiserMaxx® 250 with Vibrance
CM,C2,Vi5	CruiserMaxx® 250, Vibrance Cinco
CM,C2,Vi,Va	CruiserMaxx® 250 with Vibrance, Vayantis®
FALEKH3VQ	Bayer (channel) 2025 - AC,P1V,EDC-EL
F,I	Fungicide, Insecticide
Lum	LumiGEN™ (Corteva Agriscience)
Lum, L1	LumiGEN, Lumisure 1250
P5V	Poncho 500/Votivo
P5V,Lu	Poncho 500/Votivo, Lumiante™
SL	Starting Line - F,I,B,Ne,Nu (Merschman Seeds)

---

\* Seed treatments may include unspecified plant health promoting components.